



# EcuTek Vehicle Interface Driver Installation Guide for Windows Vista & Windows 7

v4.0

## Instructions for Windows Vista & Windows 7

---

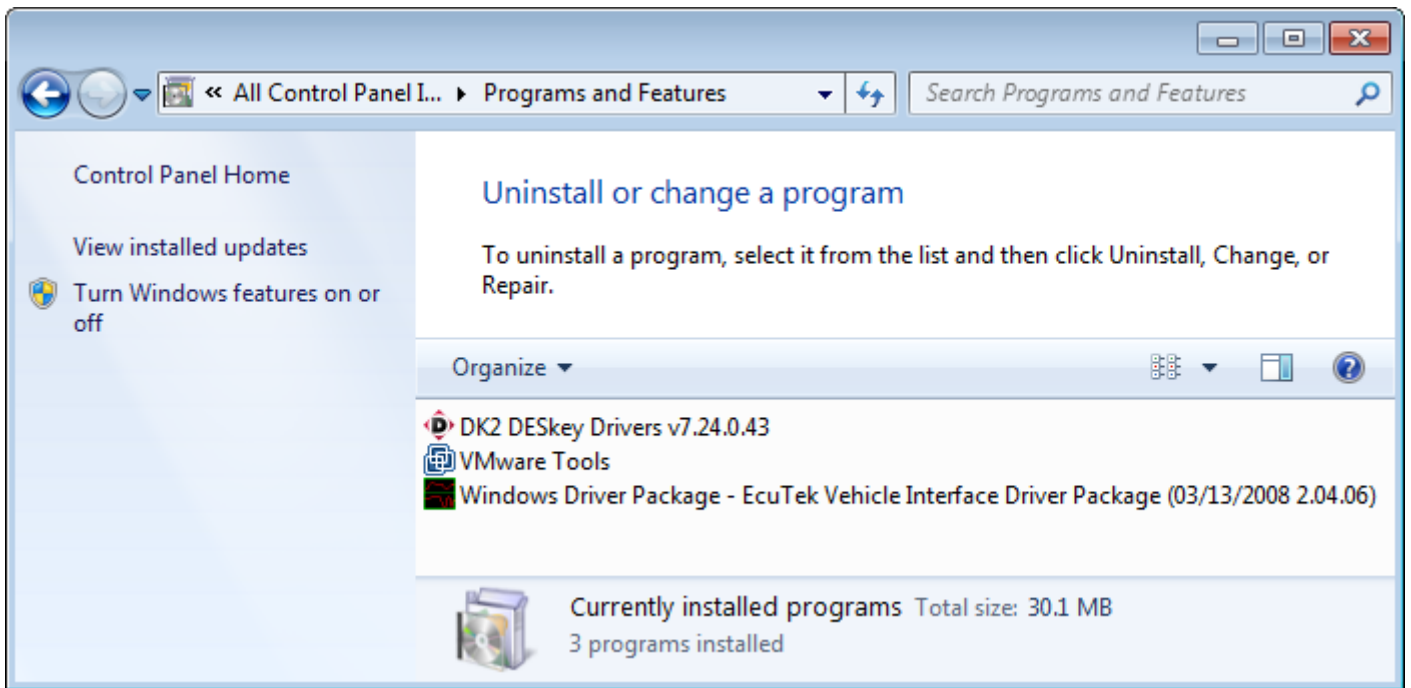
### Windows Vista & Windows 7 Installation steps overview:

1. *Uninstall any old USB Vehicle Interface drivers*
2. *Download and run the EcuTek App Downloader*
3. *Install the latest Vehicle Interface drivers*
4. *Plug in the EcuTek USB Vehicle Interface*
5. *Start EcuTek software*

### Step 1: Uninstall old USB Vehicle Interface drivers

**NOTE:** This is a very important step, please do not skip it. This step is not required however when installing EcuTek software for the first time on a new PC/Laptop that has never had an EcuTek Vehicle Interface connected to it.

- **Unplug** all EcuTek USB Vehicle Interfaces
- Go to “**Uninstall a program**” from the Control panel (also called “Programs and Features”)
- Remove all “**Windows Driver Package – EcuTek Vehicle Interface Driver Package...**”, as shown below:



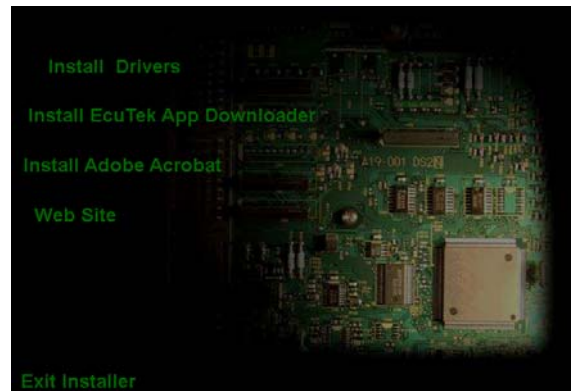
**NOTE:** Remove all “Windows Driver Package – EcuTek Vehicle Interface Driver” Packages if you have more than one listed.

**Important Note:** If you do not have the above entry in your “Uninstall or change a program” window, and you have installed the Vehicle Interface drivers in the past, then refer to the **Driver Troubleshooting** section on **page 5** before continuing to **step 2**.

## Step 2: Download and run the EcuTek App Downloader

After uninstalling the old Vehicle Interface drivers, download the EcuTek App Downloader from the EcuTek website by following these steps:

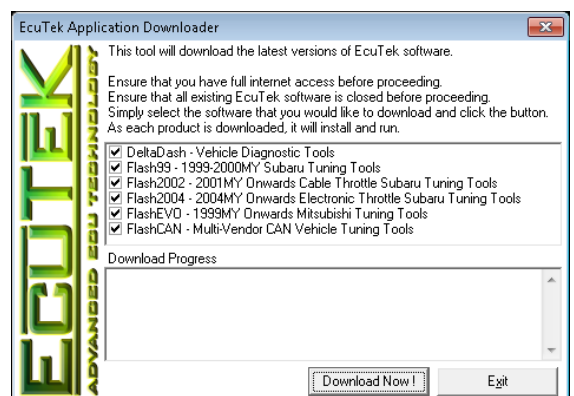
- Download the software from here:  
<http://www.ecutek.com/downloads/web/AppDldInstaller.exe>
- Run the downloaded file.
- Click on **Install Drivers** to install the Dongle license key drivers.  
**NOTE: This is NOT the Vehicle Interface drivers.**
- Plug in your EcuTek Vehicle Interface cable (or the separately provided USB/PCMCIA/ExpressCard dongle if you are using the **green** Vehicle Interface cable)
- Click on **Install EcuTek App Downloader**



- Click on the **Download Now** button to start downloading all EcuTek drivers and software that has been enabled for your Dongle.

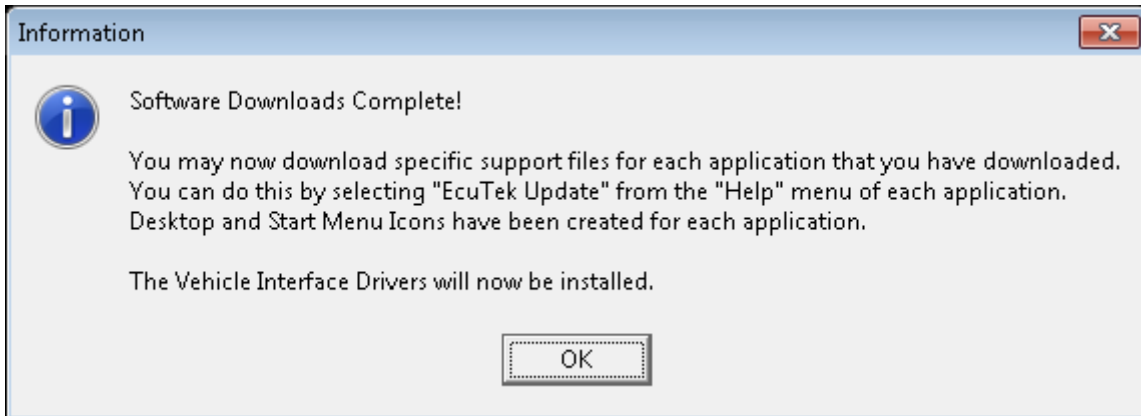
Each software package will automatically start once it has been downloaded. Please close all EcuTek flash software before proceeding to **Step 3** below (but **not** the EcuTek Vehicle Interface Installer).

If a **DESkey not Found** error message is shown when starting the App Downloader, then please double check that the License Key (dongle) drivers are correctly installed.



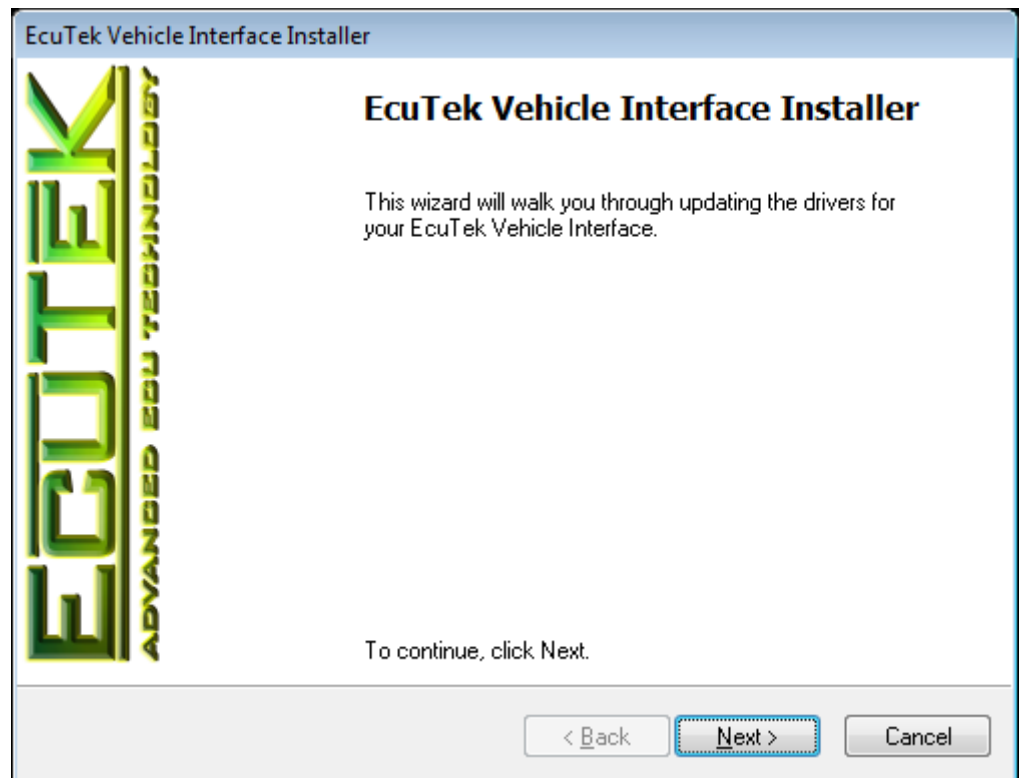
### Step 3: Install the Vehicle Interface drivers

The EcuTek App Downloader will show this message when it has completed the software downloads:

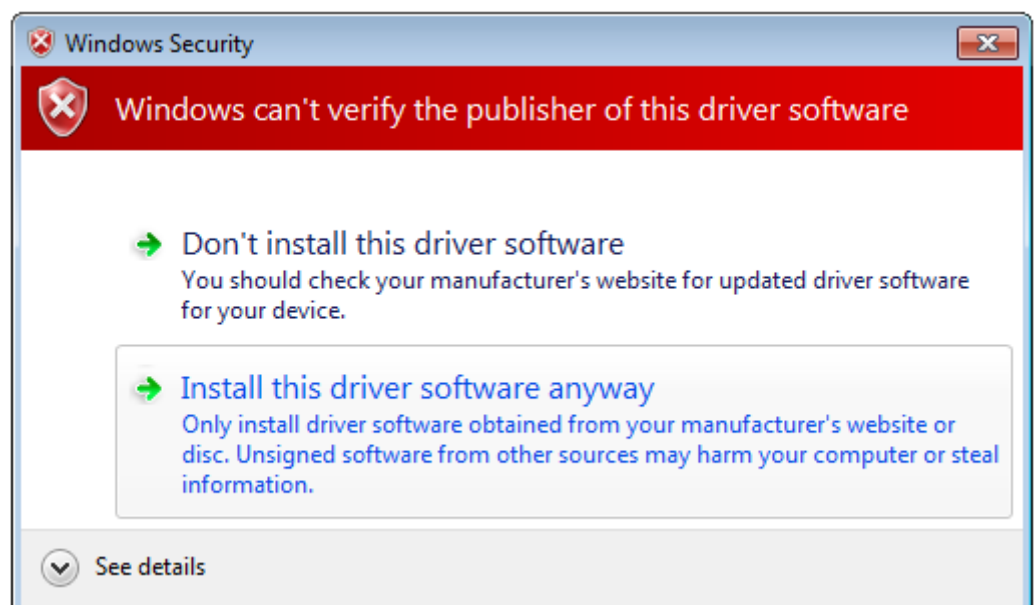


You will get prompted with the following after clicking **OK**:

- Click **Next** to start the Vehicle Interface driver installation.

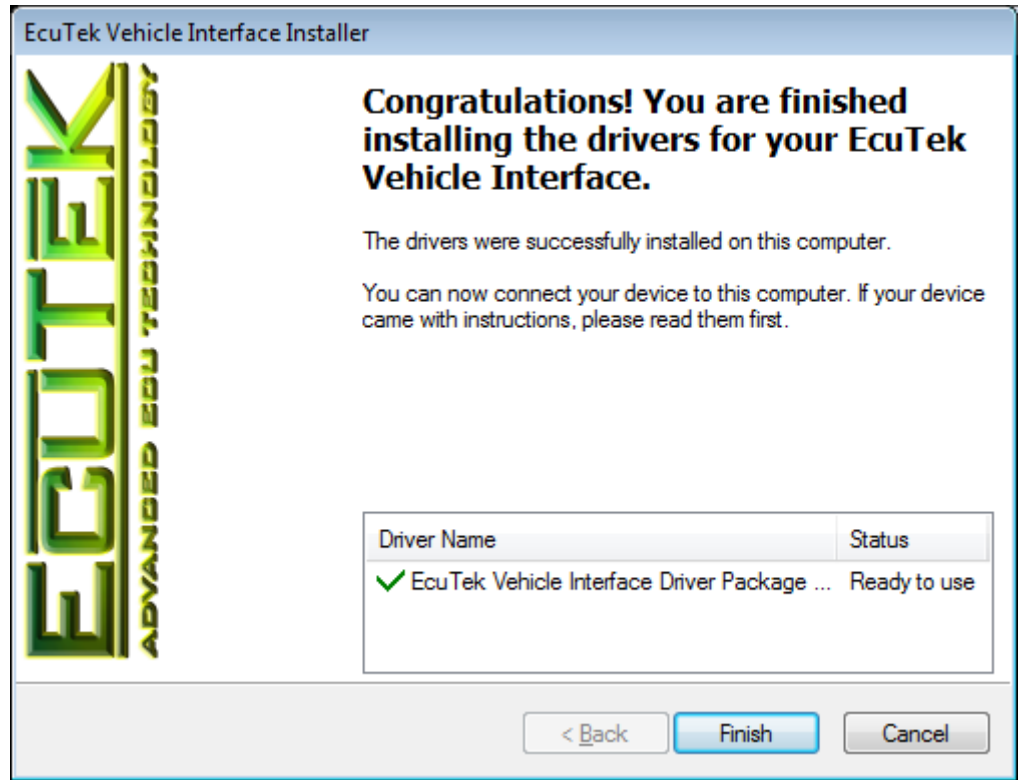


- Click on "**Install this driver software anyway**" when you get prompted with this message:



NOTE: The next step can take up to a minute to finish on some machines.

The drivers installed successfully if you received this message:

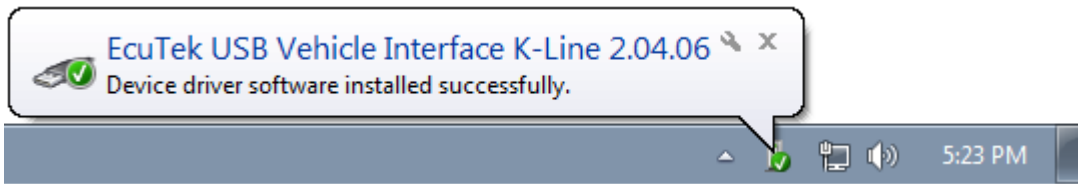


- Close the EcuTek App Downloader once all software and drivers are finished downloading and installing.

#### Step 4: Plug in the EcuTek USB Vehicle Interface

- Plug in the EcuTek USB Vehicle Interface after installing Vehicle Interface drivers. If the Vehicle Interface is already plugged in, then unplug it and plug it back in (preferably into another USB socket).

You will receive a message in your System Tray indicating that the driver was installed successfully:

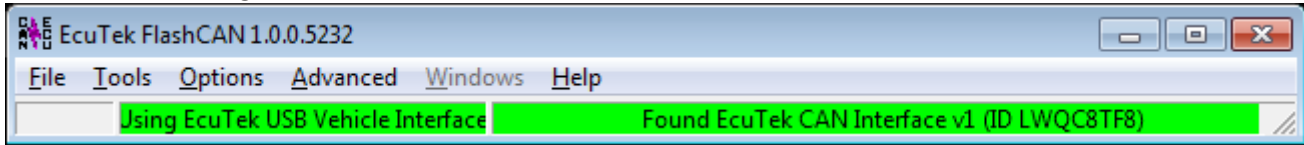


Note that it is showing "2.04.06" after "EcuTek USB Vehicle Interface...". This indicates that the latest drivers have been installed correctly.

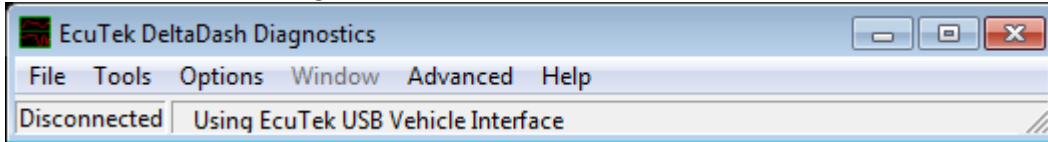
## Step 5: Start your EcuTek software

- Run the downloaded EcuTek software and check that it has detected your Vehicle Interface, as shown below:

FlashCAN will show green status bars if the K-Line and CAN Vehicle Interfaces are found:



DeltaDash will show "Using EcuTek USB Vehicle Interface" in the status bar:



**NOTE:** You must run Flash2004v2 or FlashCANv2 if you are using the new green Vehicle Interface cable.

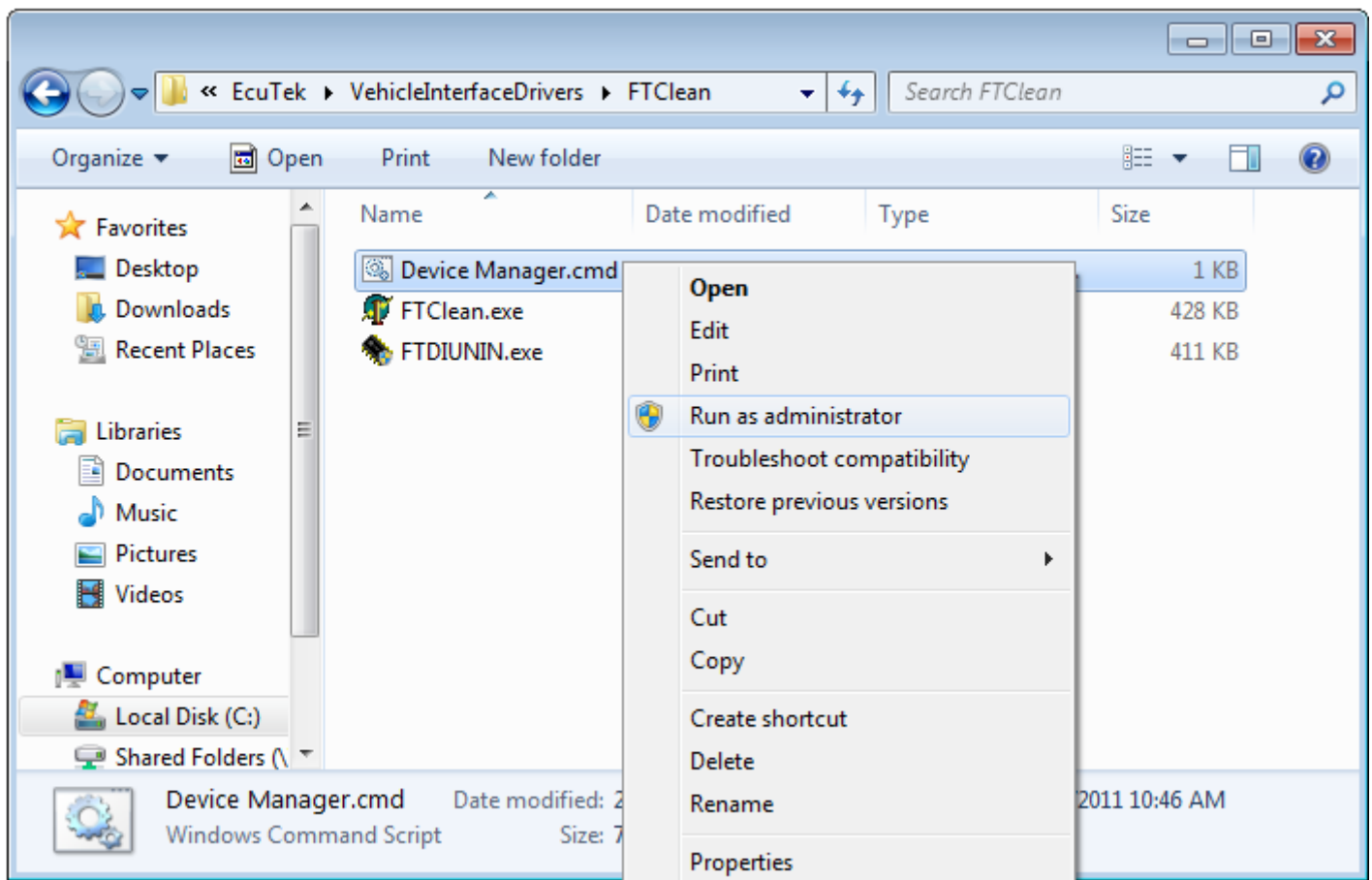
## Driver Troubleshooting

### Additional Driver Uninstall Options for Windows Vista & Windows 7

It is possible to uninstall the old Vehicle Interface drivers from the Device Manager under Windows 7. This is useful when the EcuTek Driver Package is not listed the "Uninstall or change a program" window (called "Programs and Features" or "Uninstall a program" under the Control Panel).

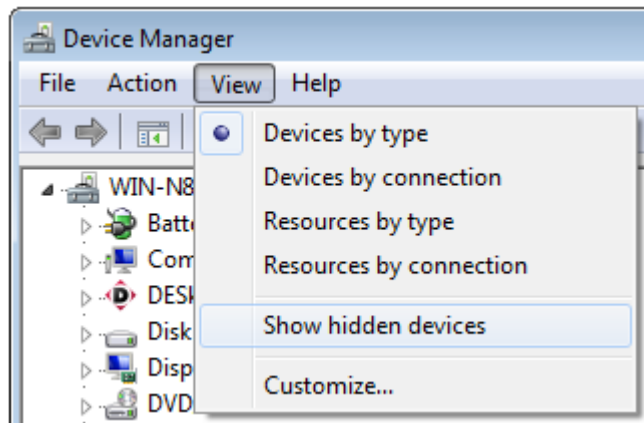
**NOTE:** First uninstall all **EcuTek Driver Packages** from the Add or Remove Programs before following the below steps.

Browse to **C:\EcuTek\VehicleInterfaceDrivers\FTClean** and right-click on the file called "Device Manager" and select "Run as administrator".



This will open the Device Manager.

Now select **Show hidden devices** from the View menu, as shown here:

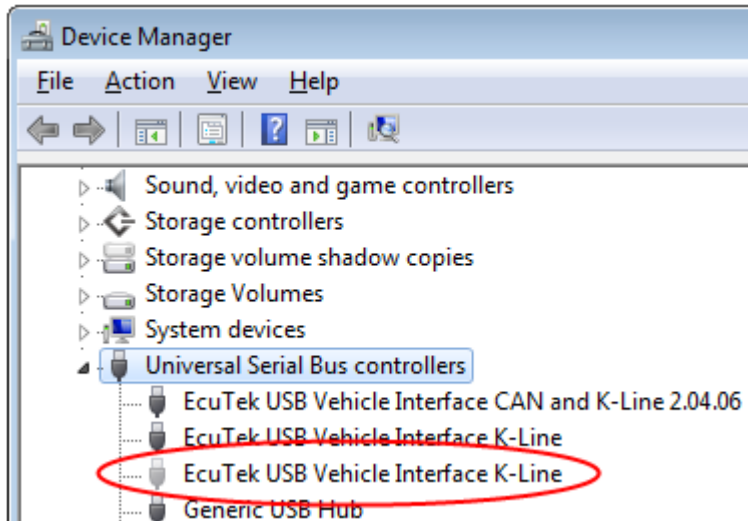


Scroll down to **Universal Serial Bus controllers** and look for devices called “EcuTek USB Vehicle Interface...”

In this screenshot you can see that the “CAN and K-Line” interface as the correct 2.04.06 drivers installed, so it is NOT necessary to uninstall that driver.

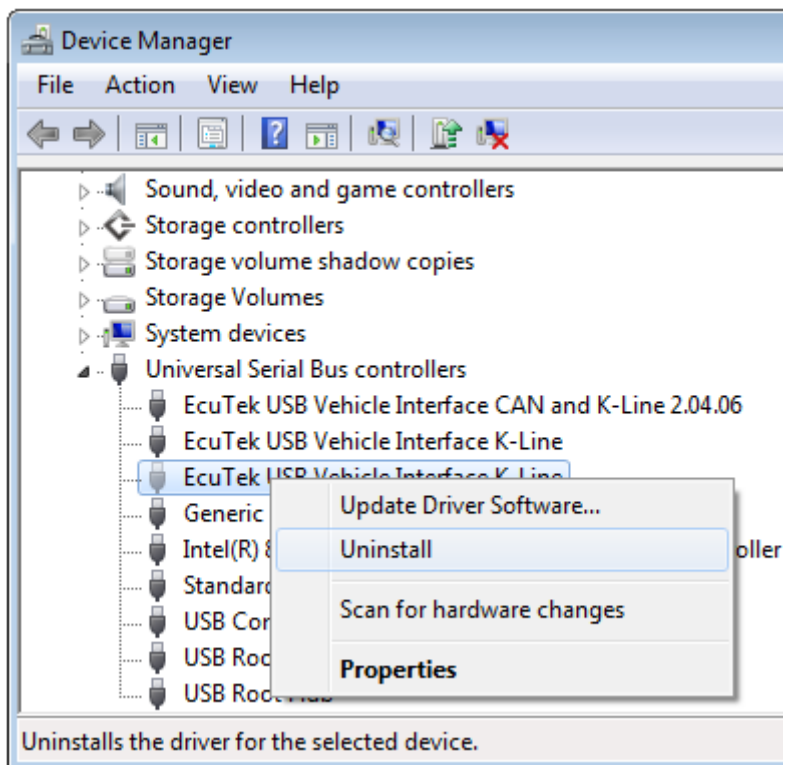
The other two interfaces have the old drivers installed, so we need to uninstall the drivers for those interfaces.

The red circled interface that has a greyed out icon means that it is not currently connected, but it is still possible to uninstall the driver for that interface.



**Right-click** on the interface that has the wrong drivers installed (the name will not show “2.04.06” at the end).

Select **Uninstall**, as show here:



Tick the **Delete the driver software for this device** option (if it is shown) and then click **OK**, as shown here:

Repeat this for every “EcuTek USB Vehicle Interface...” that has the old drivers installed (the name will not show “2.04.06” at the end).



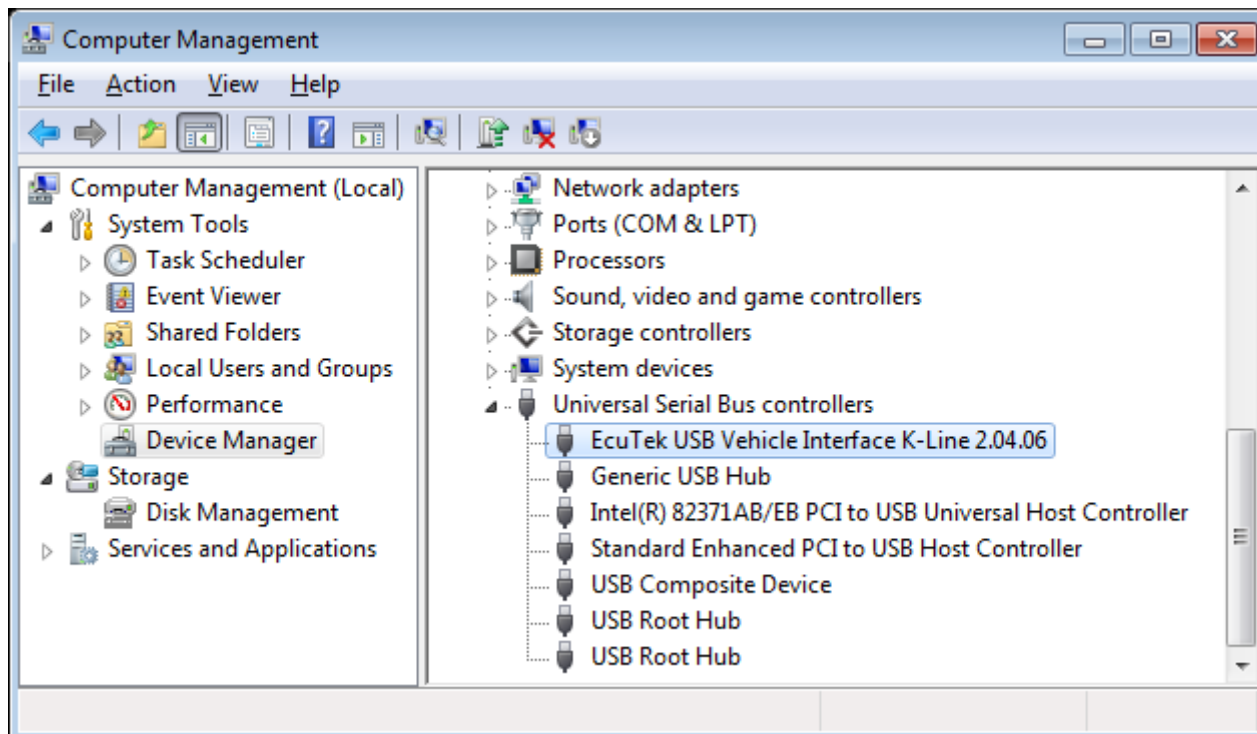
**IMPORTANT NOTE:** Continue to **Step 2** of the Installations Steps in the beginning of the manual to complete the driver installation.

## Advanced Driver Troubleshooting

**NOTE:** Only follow these steps if the software does NOT detect the Vehicle Interface, or if a warning message is shown when you start the EcuTek software saying that you have the wrong drivers installed.

- Plug in the Vehicle Interface cable into the PC/Laptop
- From the Start Menu, right click on My Computer and select Manage
- Select Device Manager in the left panel

Device Manager must show this after installing the latest Vehicle Interface driver:



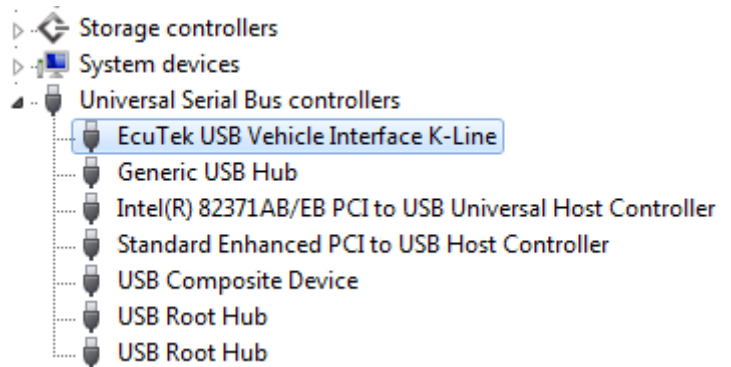
Note that it is showing ‘**2.04.06**’ after “EcuTek USB Vehicle Interface...”. This indicates that the latest drivers have been installed correctly.

## How to manually check and update the Vehicle Interface drivers

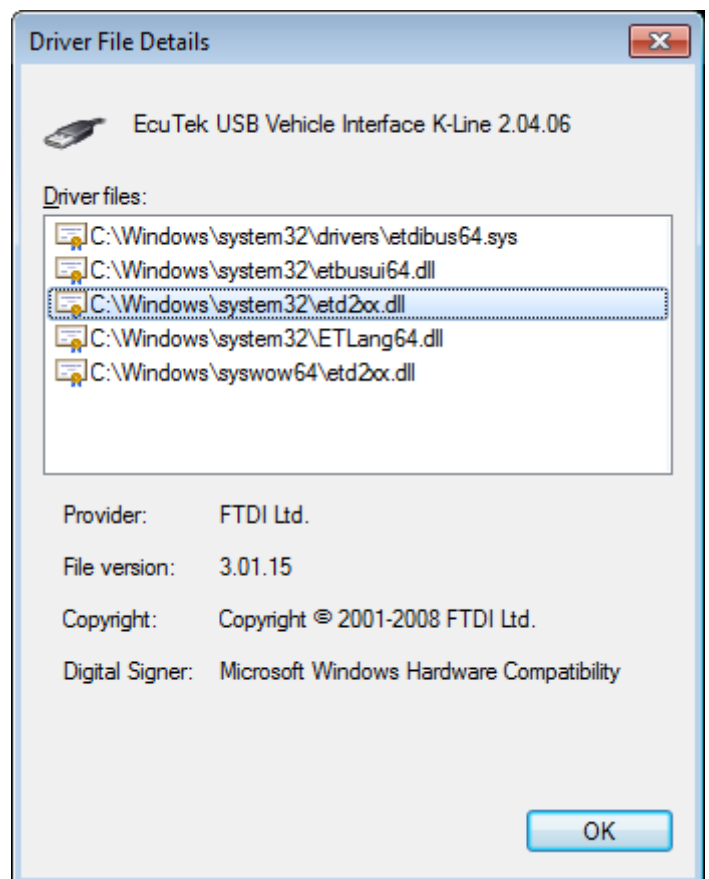
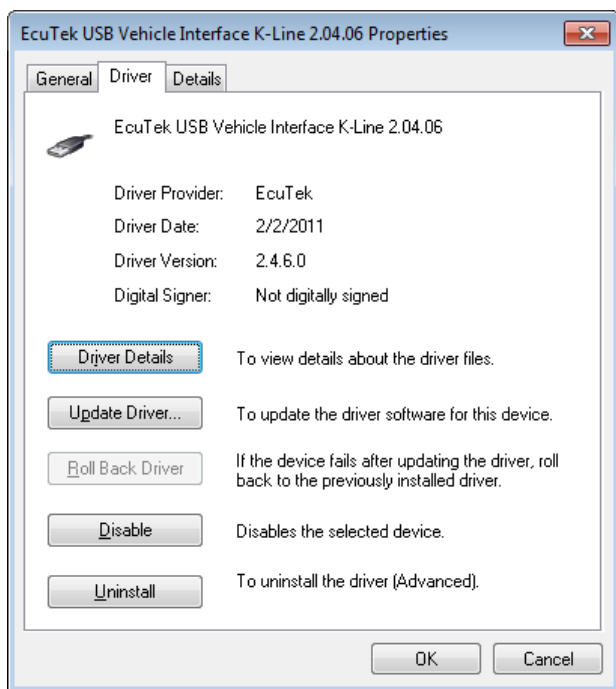
Follow the below steps to double check that the Vehicle Interface is using the correct drivers:

- Open the Device Manager and expand the “Universal Serial Bus controllers” section:

The easiest way to identify if old driver s are installed is if your Device Manager does **not** show “2.04.06” after “EcuTek USB Vehicle Interface...”, as shown here:



- From the Device Manager, go to properties of EcuTek USB Vehicle Interface, then go to the Driver tab, and then click on the “Driver Details” button, as shown below:

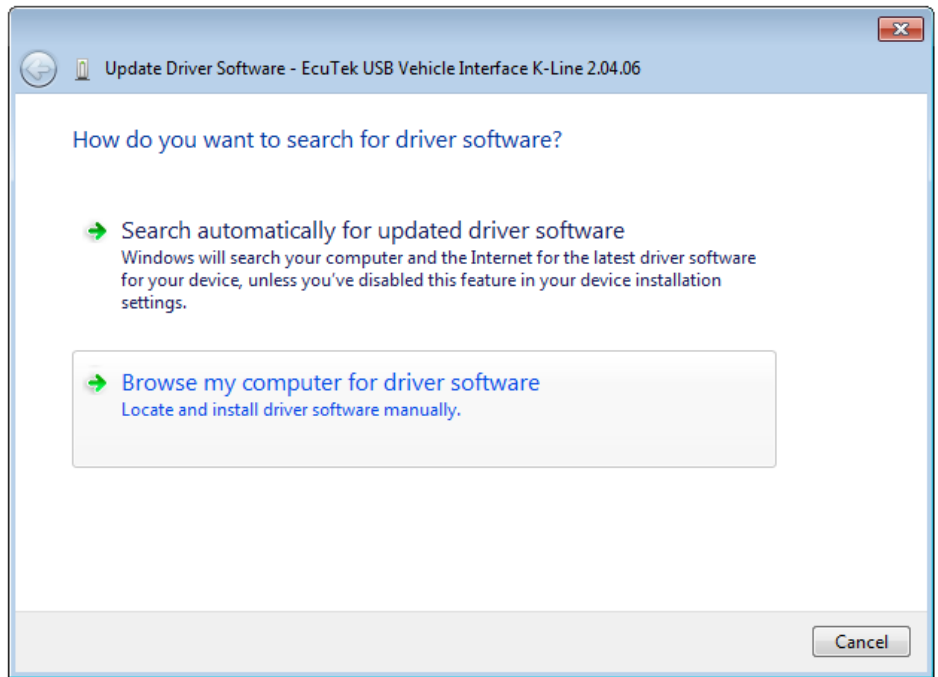


There is a problem if the above Driver File Details window shows driver names starting with “f” (such as ftd2xx.dll).

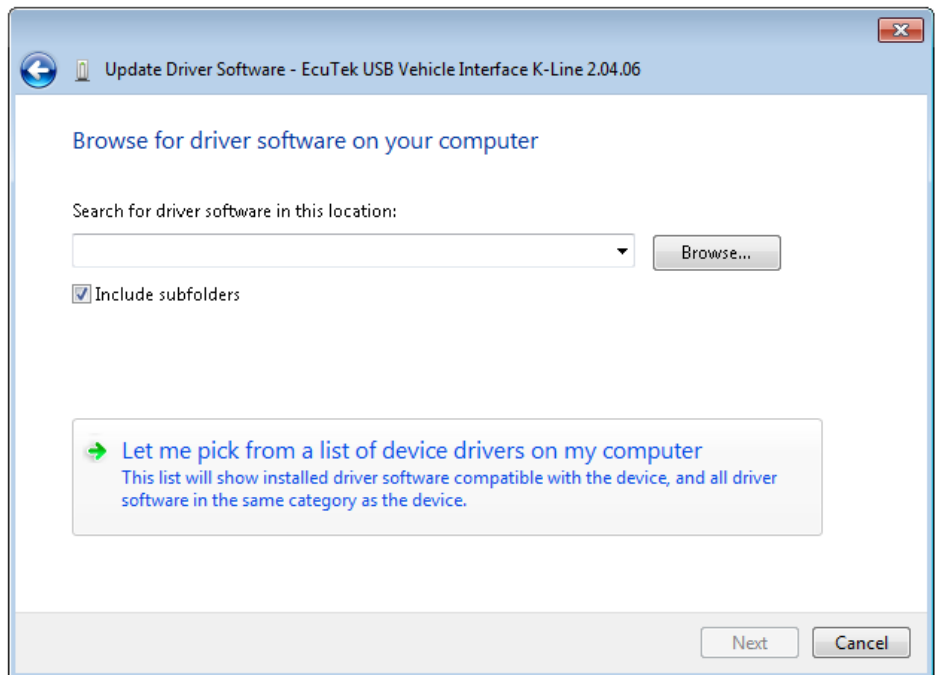
- Continue with the below steps to update the drivers to the correct version.

The following steps will manually update the Vehicle Interface drivers to the latest version:

In the Device Manager, **right-click** on the EcuTek USB Vehicle Interface, then select **Update Driver** and then select **“Browse my computer for driver software”**



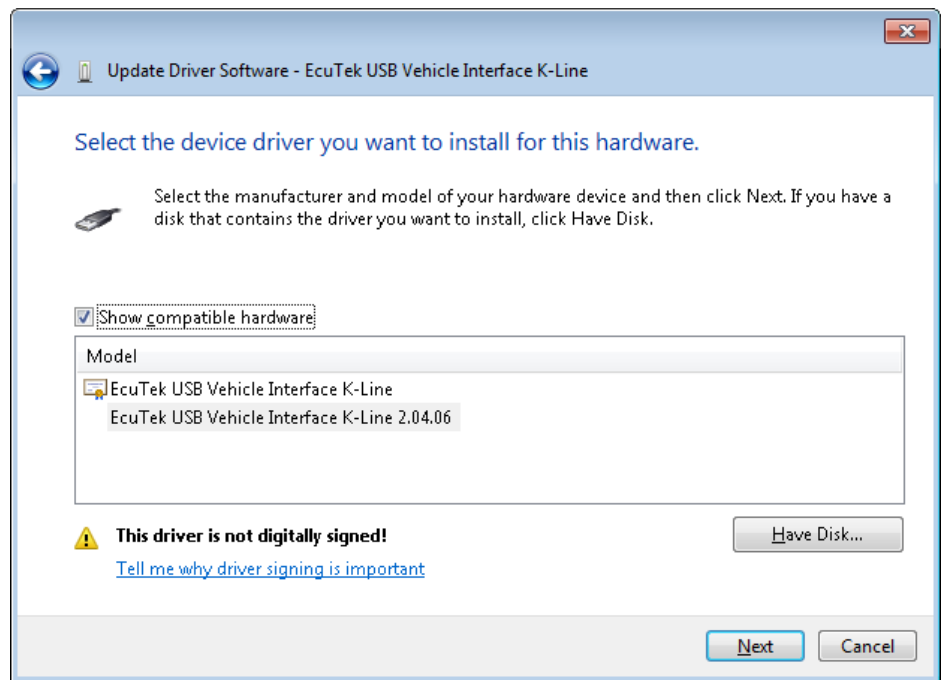
Select **“Let me pick from a list of device drivers on my computer”**



The list will show all installed drivers for the EcuTek Vehicle Interface cables.

- Select the item in the list that has '2.04.06' after EcuTek USB Vehicle Interface, then click **Next**.

Your Vehicle Interface should now use the correct drivers.



The above screenshot shows that the old driver (the one without 2.04.06 in the name) is still installed. You will need to uninstall the old driver first from the Control Panel, or by following the section called **“Additional Driver Uninstall Options for Windows Vista & Windows 7”** under the *Driver Troubleshooting* on **page 5**.

**NOTE:** If the above window does NOT show an “EcuTek USB Vehicle Interface... 2.04.06” option to select, then click on “Have Disk...” and browse to **C:\EcuTek\VehicleInterfaceDrivers** and click open, then click “OK”, and then click “Next”.