

# ECUTEK

ADVANCED ECU TECHNOLOGY

## EcuTek Vehicle Interface Driver Installation Guide for Windows XP

v4.0

### Instructions for Windows XP

---

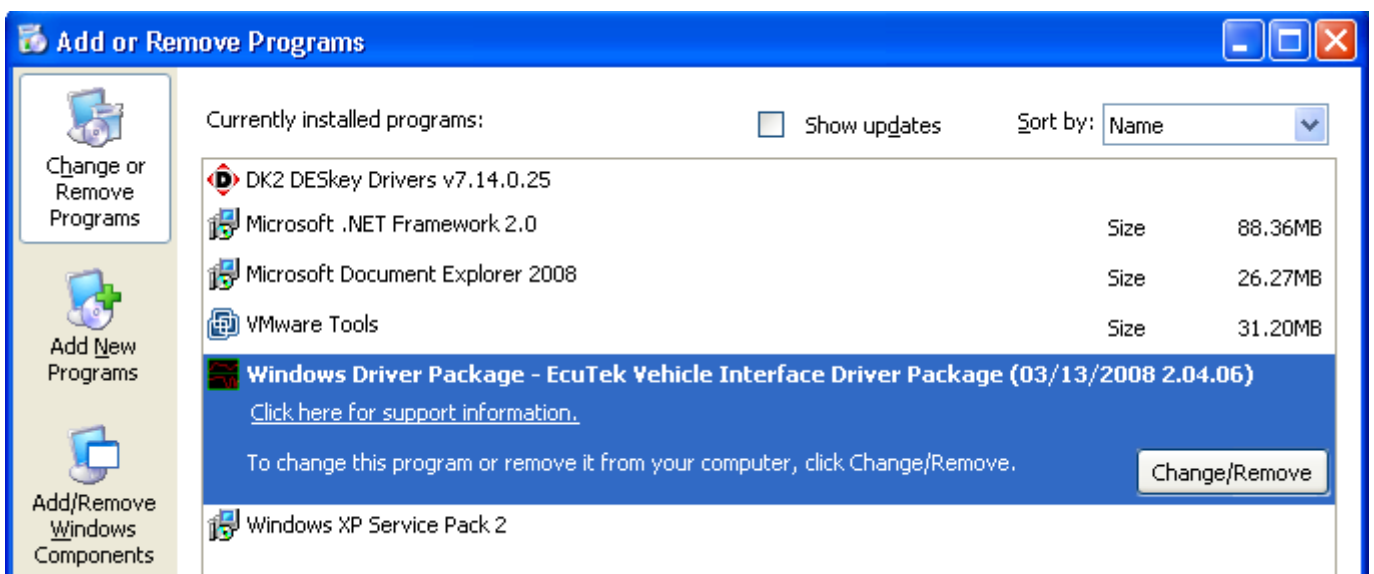
#### Windows XP Installation steps overview:

1. Uninstall any old USB Vehicle Interface drivers
2. Download and run the EcuTek App Downloader
3. Install the latest Vehicle Interface drivers
4. Plug in the EcuTek USB Vehicle Interface
5. Start EcuTek software

#### Step 1: Uninstall old USB Vehicle Interface drivers

**NOTE:** This is a very important step, please do not skip it. This step is not required however on a new PC/Laptop that has never had an EcuTek Vehicle Interface connected to it.

- **Unplug** all EcuTek USB Vehicle Interfaces
- Go to **Add or Remove Programs** from the Control Panel and remove all **“Windows Driver Package – EcuTek Vehicle Interface Driver Package”**, as shown below:



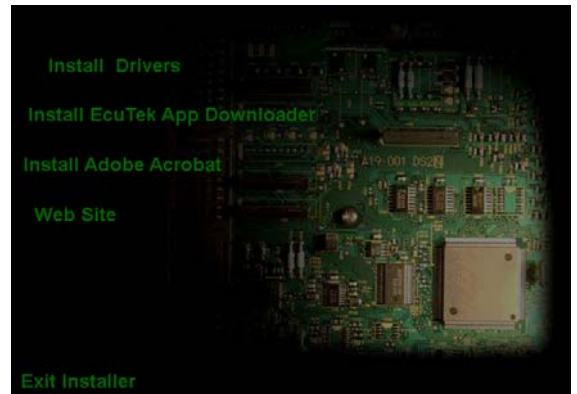
NOTE: Remove **all** “Windows Driver Package – EcuTek Vehicle Interface Driver” Packages if you have more than one listed.

**Important Note:** If you do not have the above entry in your Add or Remove Programs window, and you have installed the Vehicle Interface drivers in the past, then you must refer to **Driver Troubleshooting** section on **page 6** before continuing to **Step 2**.

## Step 2: Download and run the EcuTek App Downloader

After uninstalling the old Vehicle Interface drivers, download the EcuTek App Downloader from the EcuTek website by following these steps:

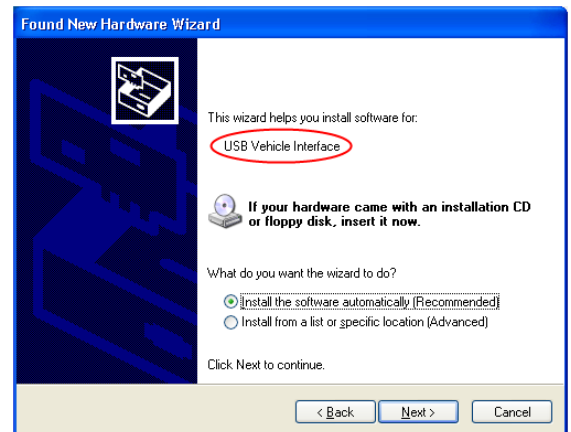
- Download the software from here:  
<http://www.ecutek.com/downloads/web/AppDldInstaller.exe>
- Run the downloaded file.
- Click on **Install Drivers** to install the License Key (dongle) drivers.  
**NOTE: This is NOT the Vehicle Interface drivers.**
- Plug in your EcuTek Vehicle Interface cable (or the separately provided USB/PCMCIA/ExpressCard Dongle if you are using the **green** Vehicle Interface cable)



**NOTE:** The black Vehicle Interface cable requires separate drivers for the License Key (dongle) and the Vehicle Interface hardware. At this point we have only installed the dongle drivers, so Windows will not be able to install the drivers for the Vehicle Interface yet. We therefore need to cancel the **Found New Hardware Wizard** if a **USB Vehicle Interface** is found. Do NOT cancel the hardware wizard for the **DK2 USB** dongle.

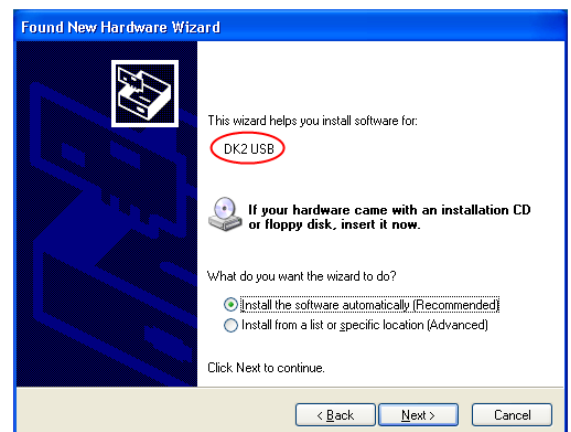
- Click on **Cancel** if a hardware wizard detects the **USB Vehicle Interface**. We will install the drivers for the Vehicle Interface in **Step 3**.

NOTE: The USB Vehicle Interface will only be detected if the **black** Vehicle Interface cable is used.

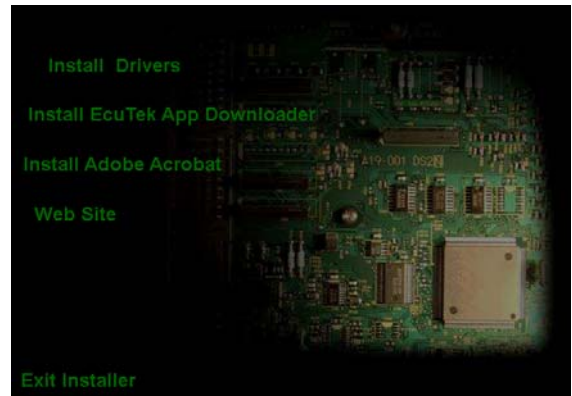


- Select **Install the software automatically (Recommended)** and then click **Next** if a hardware wizard detects the **DK2 USB** or **DK2usb DESkey**.

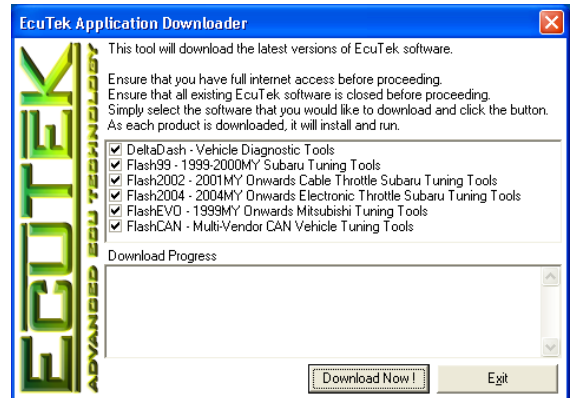
- Click **Continue Anyway** to finish the dongle driver installation.



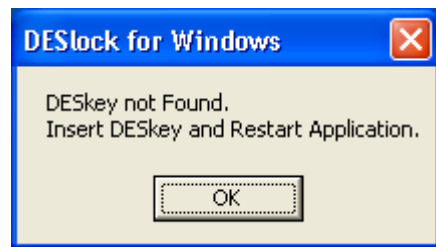
- Click on **Install EcuTek App Downloader** once the dongle drivers are installed.



- Click on the **Download Now** button to start downloading all EcuTek drivers and software that has been enabled for your Dongle. Each software package will automatically start once it has been downloaded. Please close all EcuTek flash software before proceeding to **Step 3** below (but **not** the EcuTek Vehicle Interface Installer).

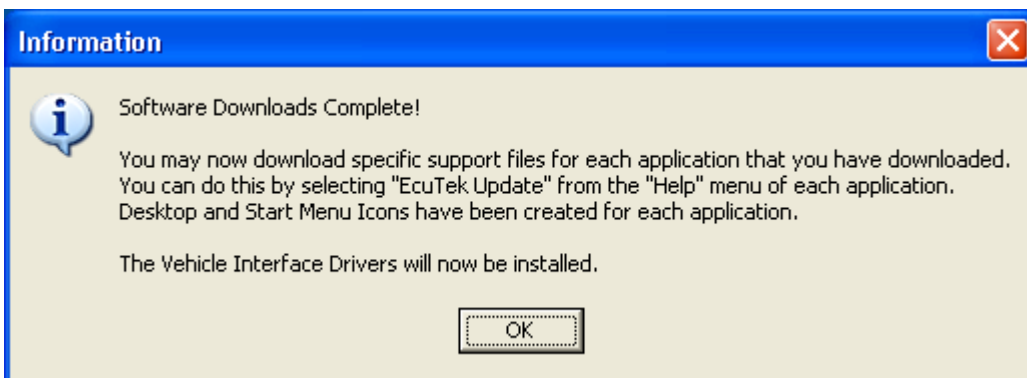


If a **DESkey not Found** error message is shown when starting the App Downloader, then please double check that the License Key (dongle) drivers are correctly installed.



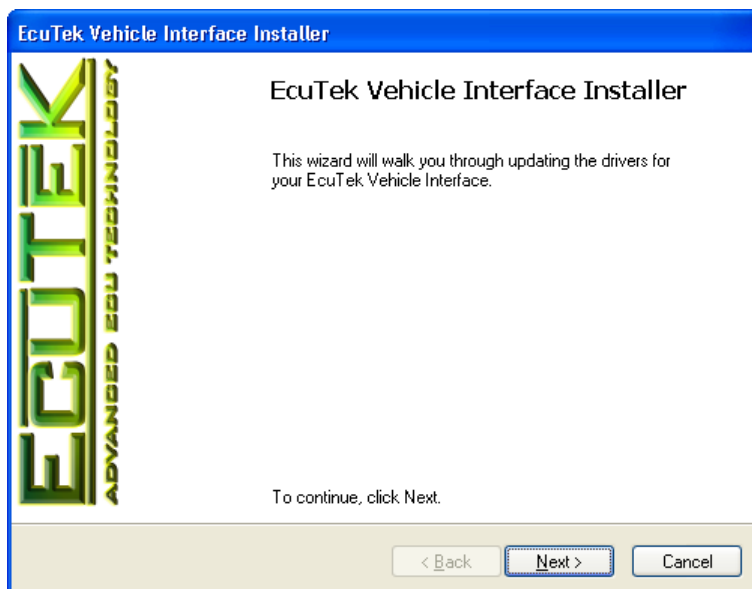
### Step 3: Install the Vehicle Interface drivers

The EcuTek App Download will show this message when it has completed the software downloads:

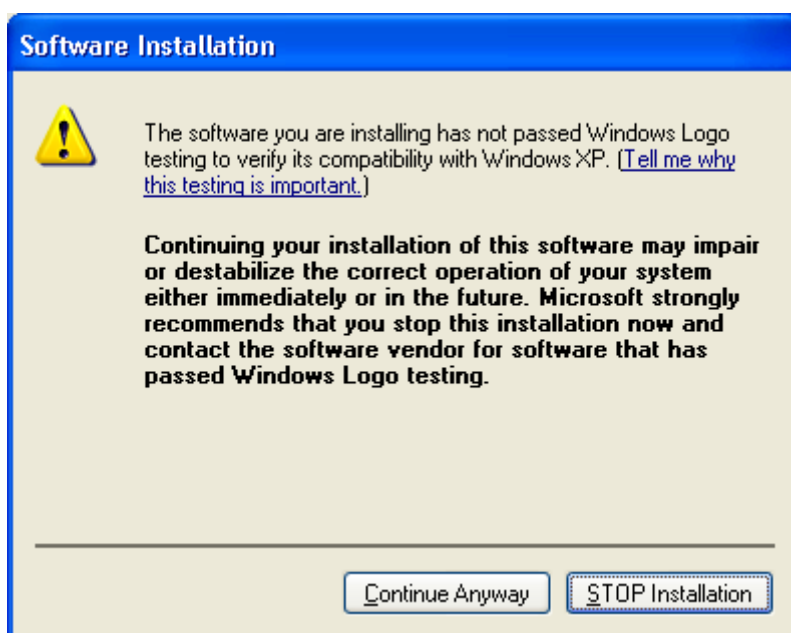


You will get prompted with the following after clicking **OK**:

- Click **Next** to start the Vehicle Interface driver installation.



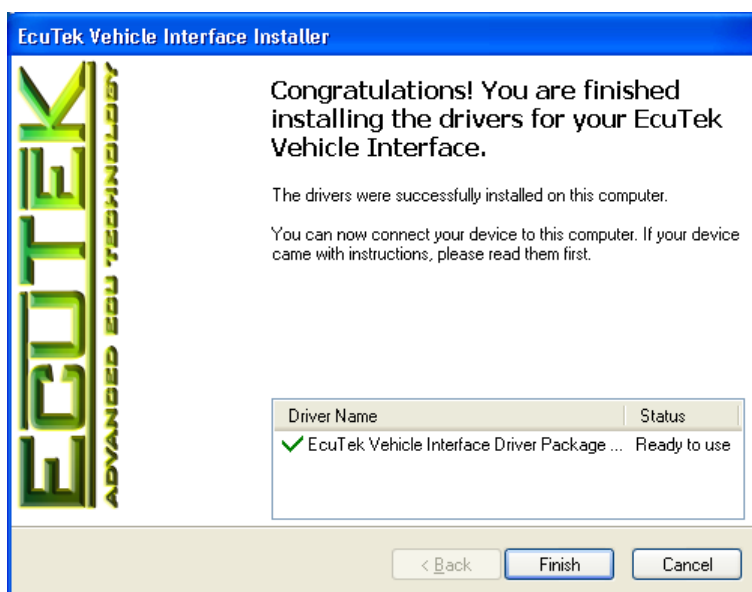
- Select **Continue Anyway** when you get prompted with this message:



NOTE: The next step can take up to a minute to finish on some machines.

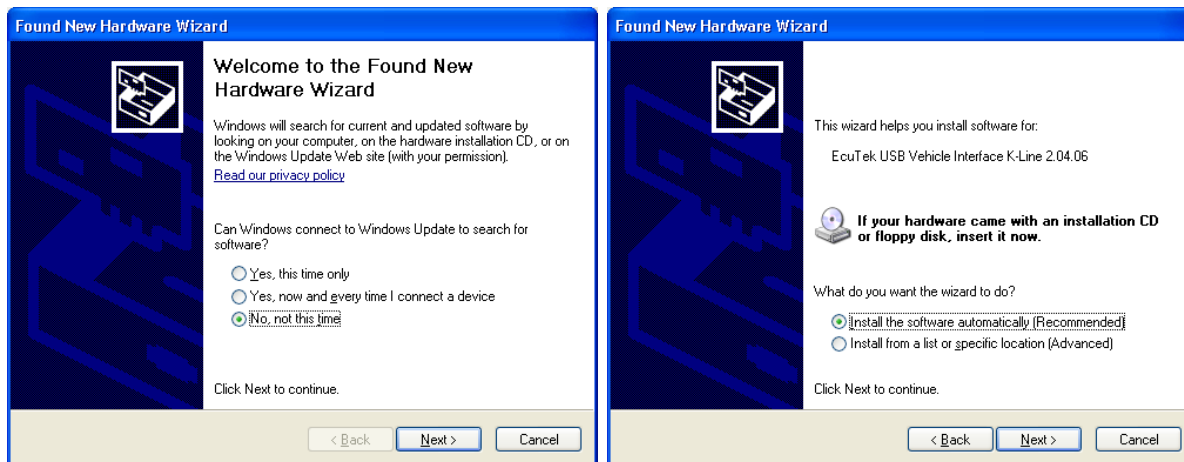
The drivers installed successfully if you received this message:

- Close the EcuTek App Downloader once all software and drivers are finished downloading and installing.



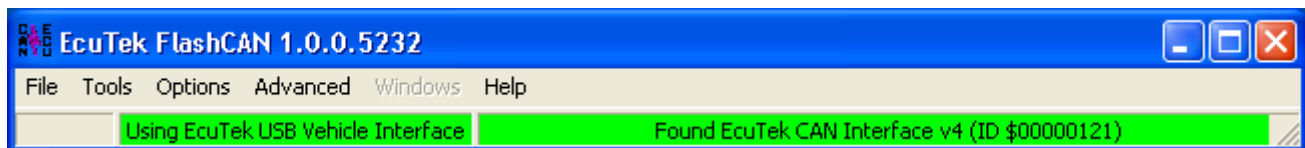
## Step 4: Plug in the EcuTek USB Vehicle Interface

- Plug in the EcuTek USB Vehicle Interface after installing Vehicle Interface drivers. If the Vehicle Interface is already plugged in, then unplug it and plug it back in (preferably into another USB socket).
- You will get a Found New Hardware wizard under XP. Select **No, not this time** for the first prompt, and then **Install the software automatically (Recommended)** and then **Continue Anyway**.

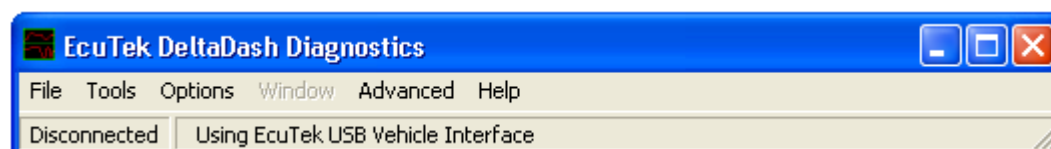


## Step 5: Start your EcuTek software

- Run the downloaded EcuTek software and check that it has detected your Vehicle Interface, as shown below: FlashCAN will show this green status bar if it found the K-Line and CAN Vehicle Interfaces:



DeltaDash will show "Using EcuTek USB Vehicle Interface" in the status bar:



**NOTE: You must run Flash2004v2 or FlashCANv2 if you are using the new green Vehicle Interface cable.**

## Driver Troubleshooting

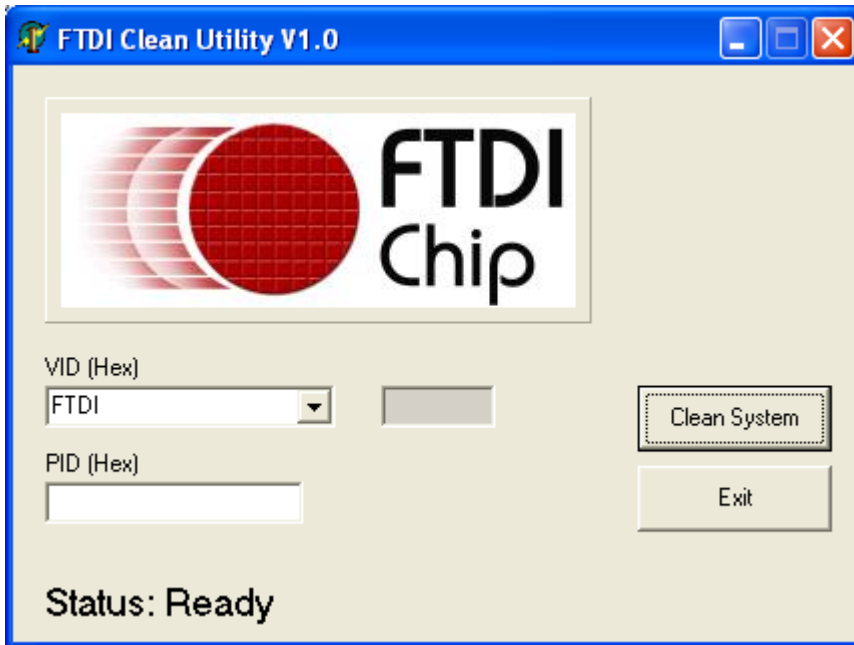
---

### Uninstall Drivers using FTCClean (Windows XP only)

**NOTE:** Do NOT use FTCClean under Windows Vista or Windows 7.

Uninstalling Vehicle Interface drivers should always be done by removing the **EcuTek Drivers Packages** through the "Add or Remove Programs" utility under the Control Panel. If there are no **EcuTek Drivers Packages** listed under "Add or Remove Programs", then it is possible to force an uninstall of **all** FTDI drivers (including the old Vehicle Interface drivers) by running the FTDI uninstaller called FTCClean.

- Run **FTCClean.exe** from the **C:\EcuTek\VehicleInterfaceDrivers\FTCClean** folder.



- Click on Clean System to start the uninstall process of the Vehicle Interface drivers.
- Make sure that **no USB Vehicle Interfaces are connected** to the computer and then click OK.
- Answer the first confirmation with Yes, and select No for the second confirmation.
- Please wait while the drivers are uninstalling. This could take some time.
- The system should now be cleaned from all old vehicle interface drivers.

**NOTE:** In case of a "File access denied" error message, delete the file "ftdiun2k.ini" located in the "C:\Windows\System32" folder, then run FTCClean again.

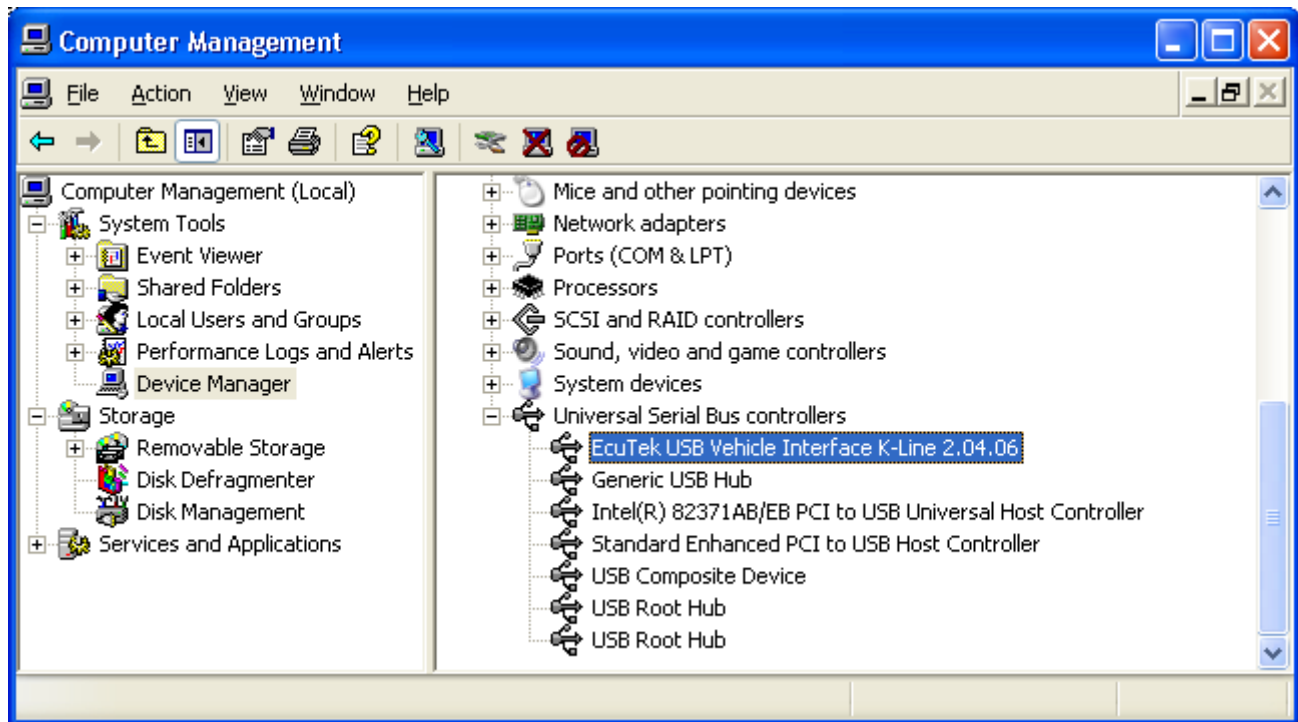
**IMPORTANT NOTE:** Continue to **Step 2** of the Installations Steps at the beginning of the manual to complete the driver installation.

# Advanced Driver Troubleshooting

**NOTE:** Only follow these steps if the software doesn't detect the Vehicle Interface, or if a warning message is shown when you start the EcuTek software saying that you have the wrong drivers installed.

- Plug in the Vehicle Interface cable into the PC/Laptop
- From the Start Menu, right click on My Computer and select Manage
- Select Device Manager in the left panel

Device Manager must show this after installing the latest Vehicle Interface driver:



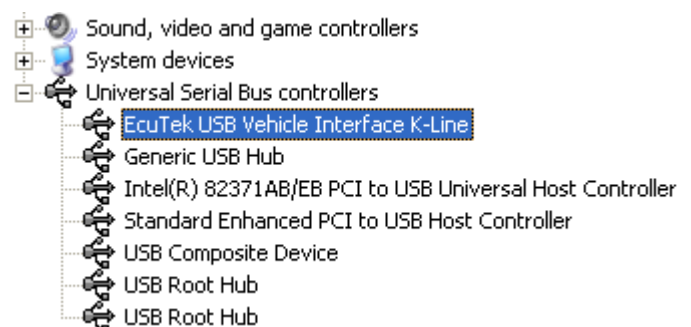
Note that it is showing '2.04.06' after "EcuTek USB Vehicle Interface...". This indicates that the latest drivers have been installed correctly.

## How to manually update the Vehicle Interface drivers

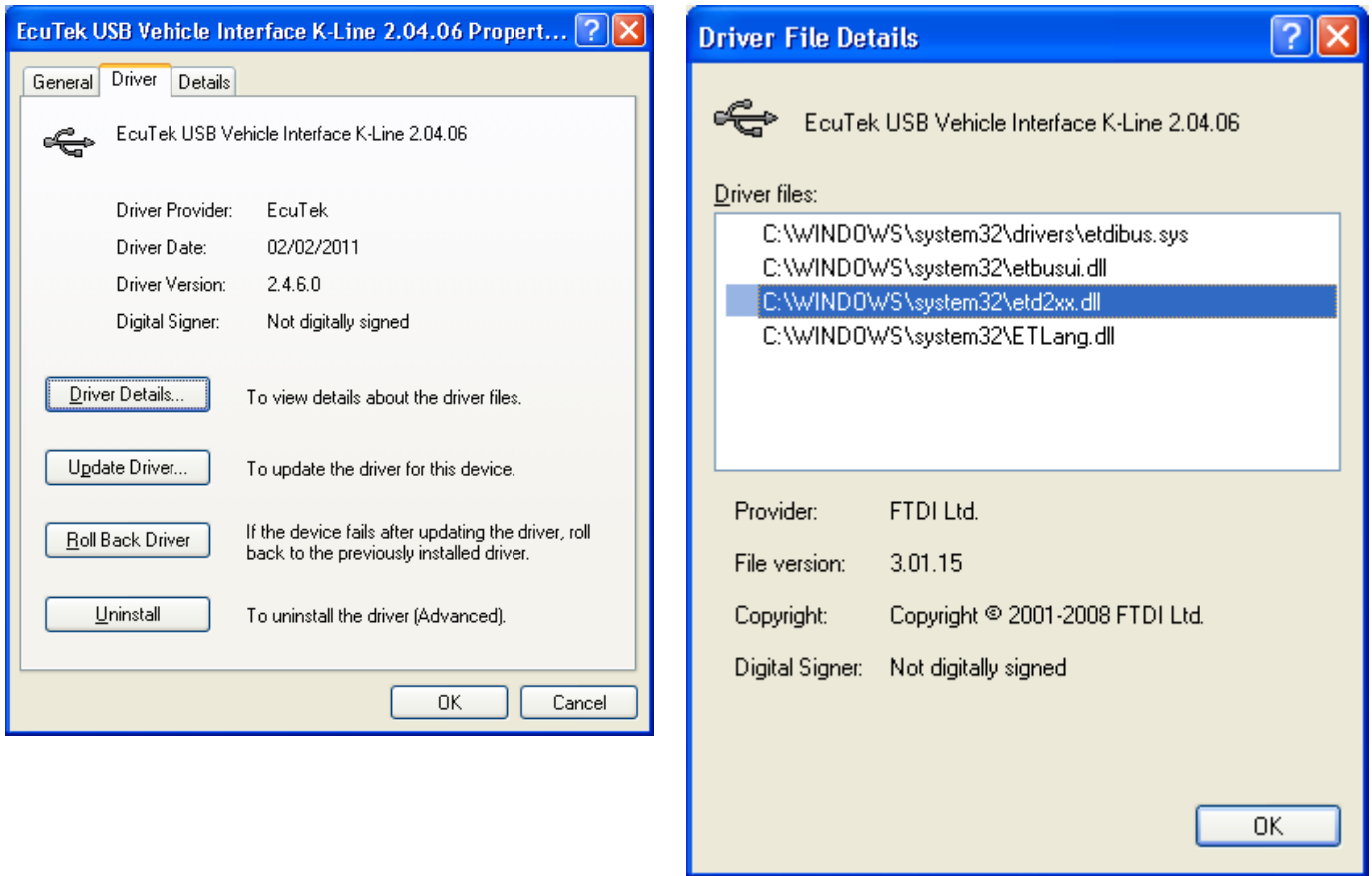
Follow the below steps to double check that the Vehicle Interface is using the correct drivers:

- Open the Device Manager and expand the "Universal Serial Bus controllers" section:

The easiest way to identify if old driver s are installed is if your Device Manager does **not** show "2.04.06" after "EcuTek USB Vehicle Interface...", as shown here:



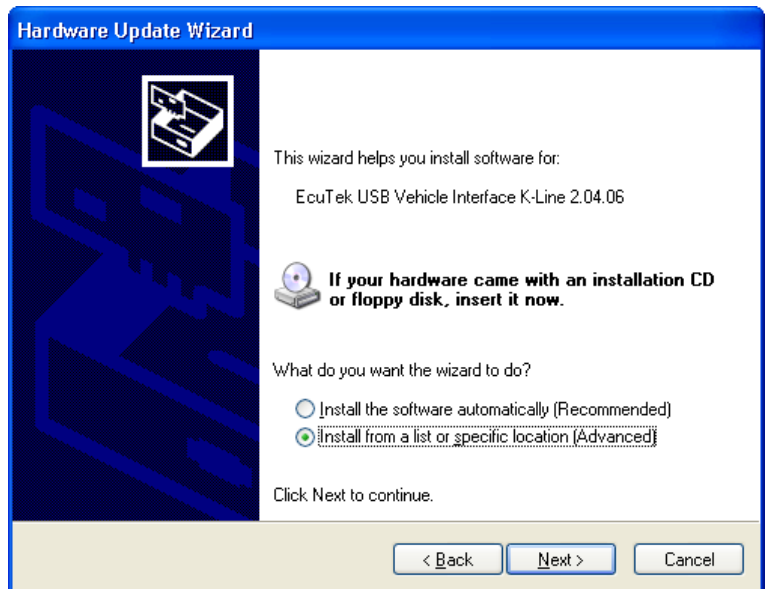
- From the Device Manager, go to properties of EcuTek USB Vehicle Interface, then go to the Driver tab, then click on “Driver Details...” button, as shown below:



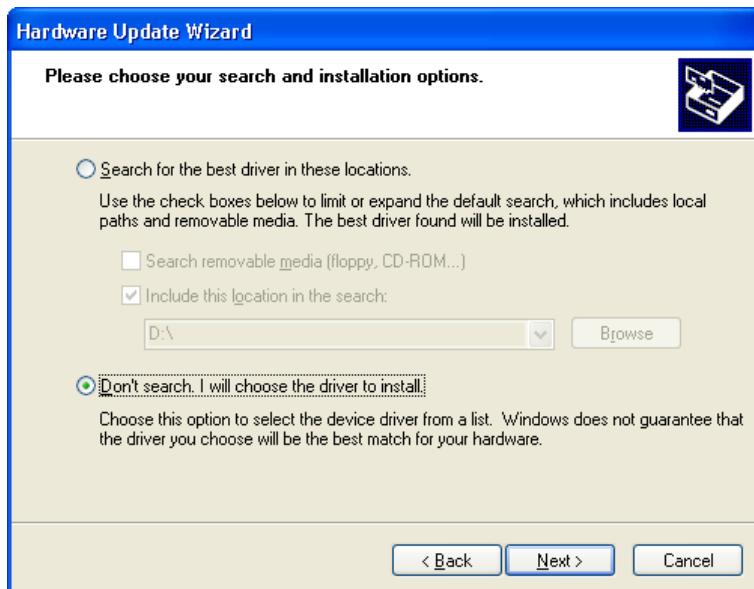
There is a problem if the above Driver File Details window shows driver names starting with “f” (such as ftd2xx.dll).

The following steps will manually update the Vehicle Interface drivers to the latest version:

- In the Device Manager, **right-click** on the EcuTek USB Vehicle Interface, then select “Update Driver” and select “Install from a list or specific location (Advanced)”



- Select “**Don’t search. I will choose the driver to install**”, and then click **Next**

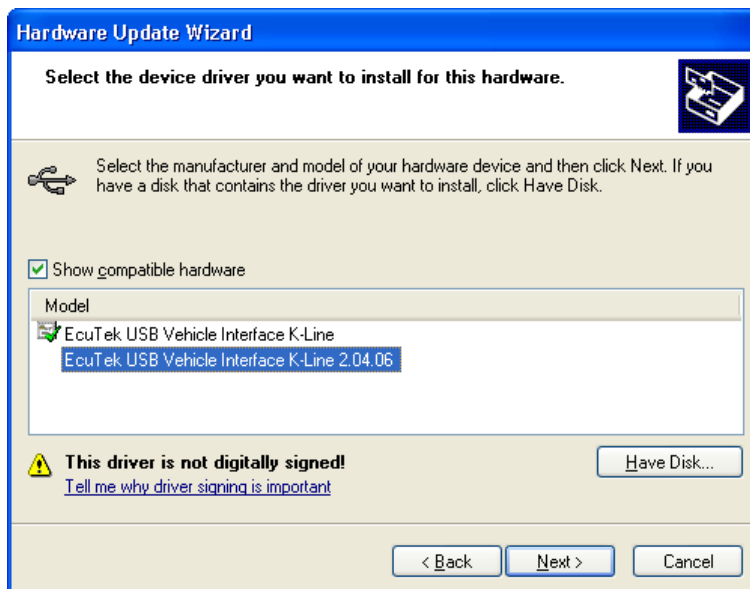


The below list will show all installed drivers for the EcuTek Vehicle Interface cables. The below screenshot shows that the old driver (the one without 2.04.06 in the name) is still installed. You will need to uninstall the old driver first from the Control Panel, or by following the section called “**Uninstall Drivers using FTCClean (Windows XP only)**” on page 6.

- Select the item in the list that has “**2.04.06**” after “EcuTek USB Vehicle Interface”, then click **Next**. Select “**Continue Anyway**” if a warning message is shown.

Your Vehicle Interface should now use the correct drivers.

**NOTE:** The screenshot shows that the old driver (the one without 2.04.06 in the name) is still installed. You will need to uninstall the old driver first from the Control Panel, or by following the section called “**Uninstall Drivers using FTCClean (Windows XP only)**” on page 6.



**NOTE:** If the above window does NOT show an “EcuTek USB Vehicle Interface... 2.04.06” option to select, then click on “Have Disk...” and browse to **C:\EcuTek\VehicleInterfaceDrivers** and click open, then click “OK”, and then click “Next”. Select “Continue Anyway” if a warning message is shown.