

# ECUTEK

## ADVANCED ECU TECHNOLOGY

### EcuTek USB Vehicle Interface Driver Installation Guide for XP, Vista and Windows 7

v3.0

#### Instructions for XP

---

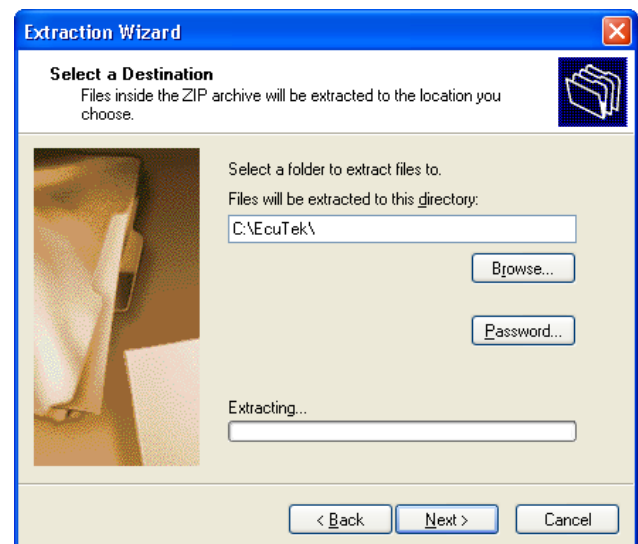
##### XP Installation steps:

1. Download the drivers
2. Install the DESkey drivers
3. Install the USB Vehicle Interface drivers
4. Plug in the EcuTek USB Vehicle Interface

##### Step 1: Download Drivers

The first thing to do when using the EcuTek USB Vehicle Interface under XP is to download the latest DESkey drivers and the Microsoft WHQL certified EcuTek USB Vehicle Interface drivers from the EcuTek website by following these steps:

- **Unplug the EcuTek USB Vehicle Interface**
- Download the drivers from here:  
<http://www.ecutek.com/downloads/web/Drivers.zip>  
(If you cannot click on the above link, then copy and paste the link into Internet Explorer)
- Save the Drivers.zip file to a temporary location, such as your Desktop.
- Extract the contents of the Drivers.zip file to **C:\EcuTek**. This will create two folders called "LicenseKeyDrivers" and "VehicleInterfaceDrivers" (To extract the downloaded file, right-click on the Drivers.zip file on your Desktop and select 'Extract All...', then click 'Next'. When prompted for a destination, type: C:\EcuTek. Click 'Next' again to extract the "LicenseKeyDrivers" and "VehicleInterfaceDrivers" folders to C:\EcuTek



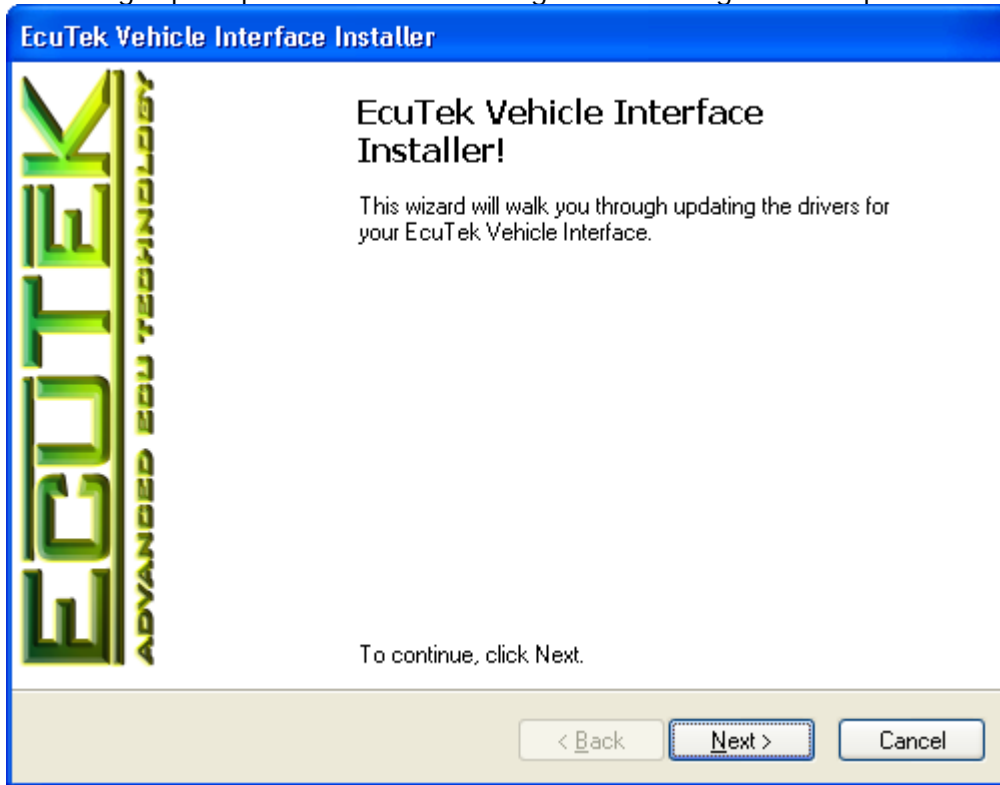
##### Step 2: Install DESkey drivers

- Open the "LicenseKeyDrivers" folder and run the 'Setup' executable. This will install the EcuTek USB Vehicle Interface's DESkey DK2 Dongle drivers.  
(Use Windows Explorer to browse to the **C:\EcuTek\LicenseKeyDrivers** folder)

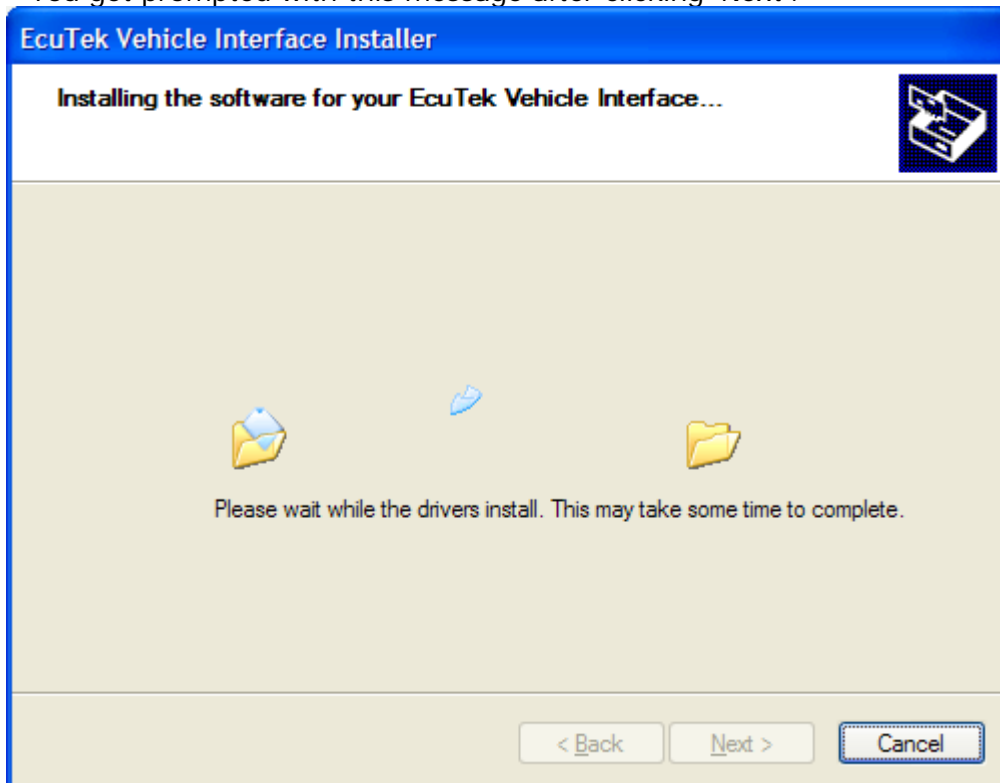
### Step 3: Install USB Vehicle Interface drivers

- Open the "VehicleInterfaceDrivers" folder and run the 'Setup' executable. This will install the EcuTek USB Vehicle Interface drivers.

You will get prompted with the following after running the 'Setup' executable:

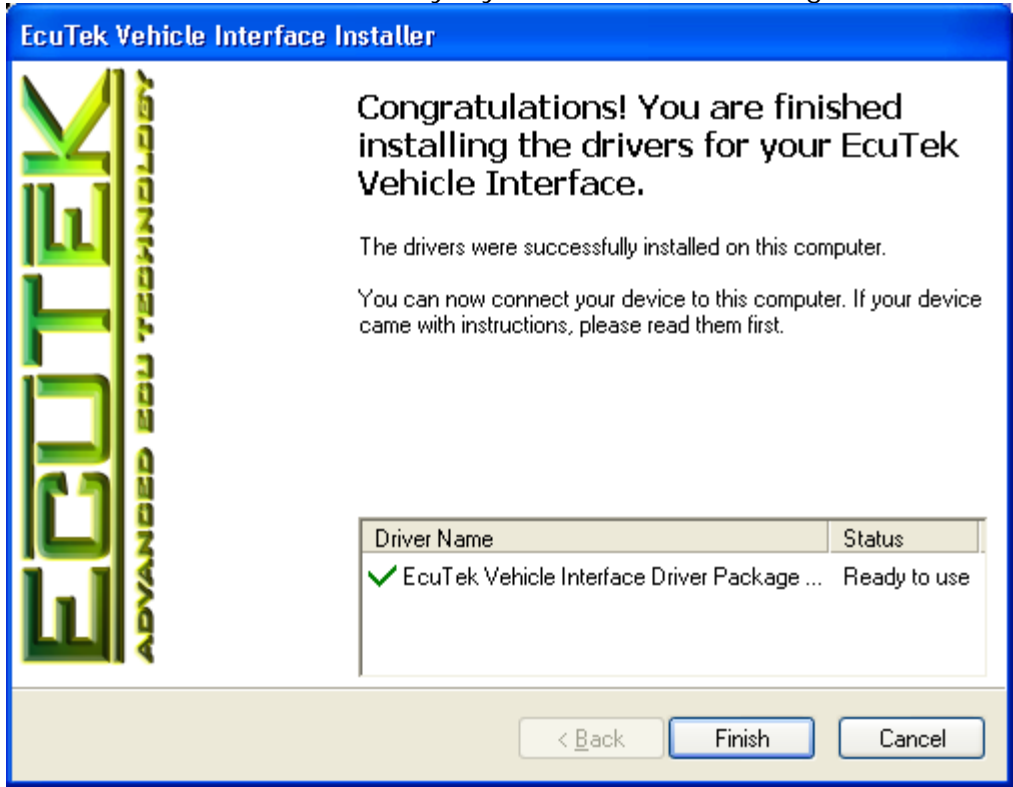


- You get prompted with this message after clicking 'Next':



**NOTE: This process can take up to a minute on some machines.**

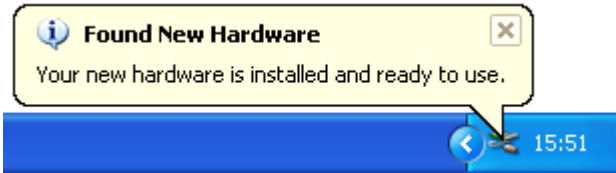
The drivers installed successfully if you received this message:



#### Step 4: Plug in the EcuTek USB Vehicle Interface

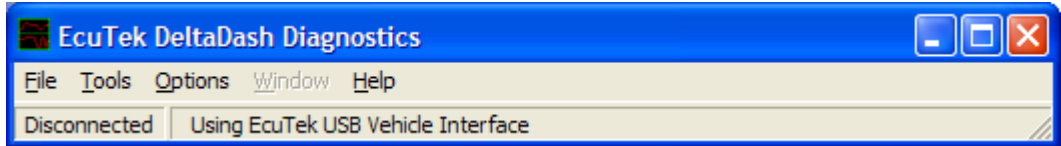
- Plug in the EcuTek USB Vehicle Interface after installing the DESkey & EcuTek drivers.

You will receive these messages in your System Tray indicating that the driver was installed successfully:



#### Step 5: Test your EcuTek software

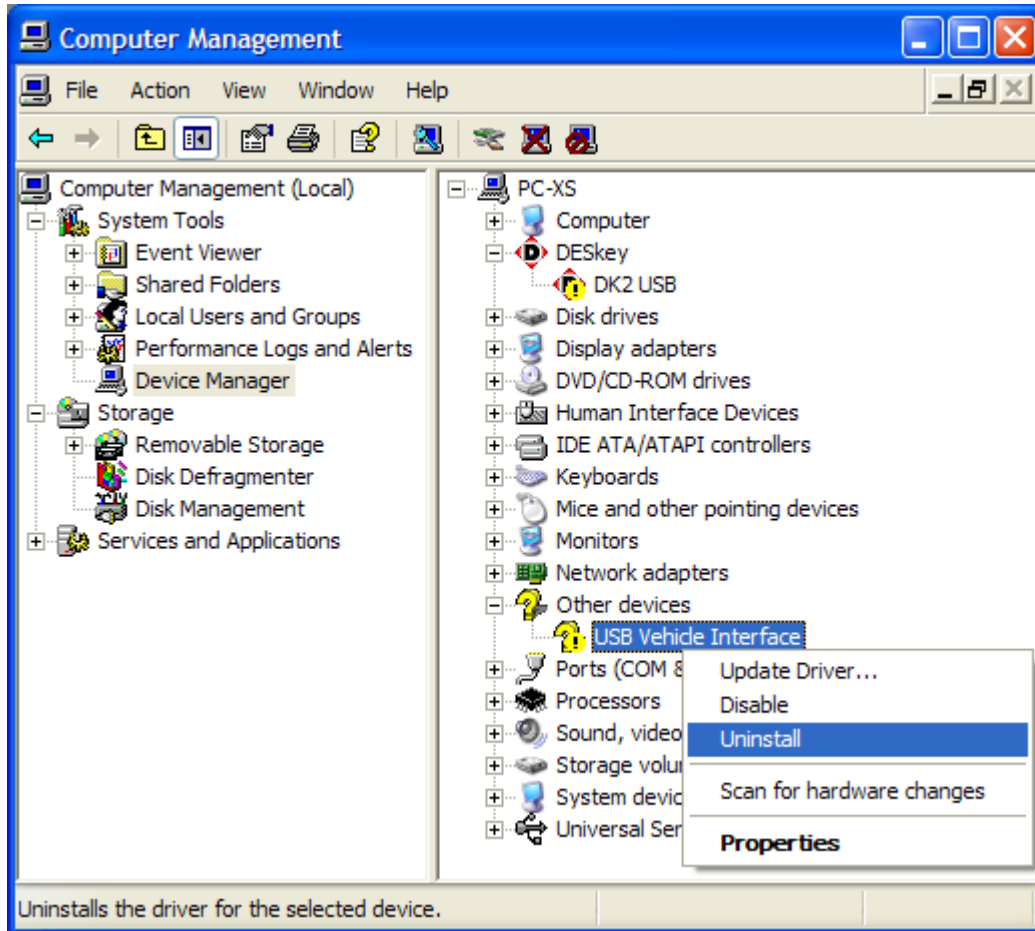
Run any EcuTek software and check that the Status Bar displays 'Using EcuTek USB Vehicle Interface':



## Removing incorrect USB drivers

NOTE: Only follow these steps if you plugged in the USB Vehicle Interface cable before installing the drivers.

- Plug in the USB Vehicle Interface vehicle interface cable into the PC/Laptop
- From the Start Menu, right click on My Computer and select Manage
- Select Device Manager in the left panel
- On the right panel right click on USB Vehicle Interface and select Uninstall



- Repeat the above step for the DK2 USB device (if applicable)
- Unplug the USB Vehicle Interface cable from the PC/Laptop
- Complete the USB Vehicle Interface installation steps relevant to your operating system (Vista or XP)

# Instructions for Vista and Windows 7

---

## Vista installation steps overview:

1. *Download the drivers*
2. *Install the DESkey drivers*
3. *Install the USB Vehicle Interface drivers*
4. *Plug in the EcuTek USB Vehicle Interface*

## Step 1: Download Drivers

The first thing to do when using the EcuTek USB Vehicle Interface under Vista is to download the Vista certified DESkey drivers and the Microsoft WHQL certified EcuTek USB Vehicle Interface drivers from the EcuTek website by following these steps:

- **Unplug the EcuTek USB Vehicle Interface**

- Download the drivers from here: <http://www.ecutek.com/downloads/web/Drivers.zip>

(If you cannot click on the above link, then copy and paste the link into Internet Explorer)

- Save the Drivers.zip file to a temporary location, such as your Desktop.
- Extract the contents of the Drivers.zip file to **C:\EcuTek**. This will create two folders called "LicenseKeyDrivers" and "VehicleInterfaceDrivers"

(To extract the downloaded file, right-click on the Drivers.zip file on your Desktop and select 'Extract All...', then click 'Next'. When prompted for a destination, type: C:\EcuTek. Click 'Extract' to extract the "LicenseKeyDrivers" and "VehicleInterfaceDrivers" folders to C:\EcuTek

## Step 2: Install DESkey drivers

- Open the "LicenseKeyDrivers" folder under **C:\EcuTek** and run the 'Setup' executable. Follow the instructions of the installer. This will install the DESkey DK2 Dongle drivers.

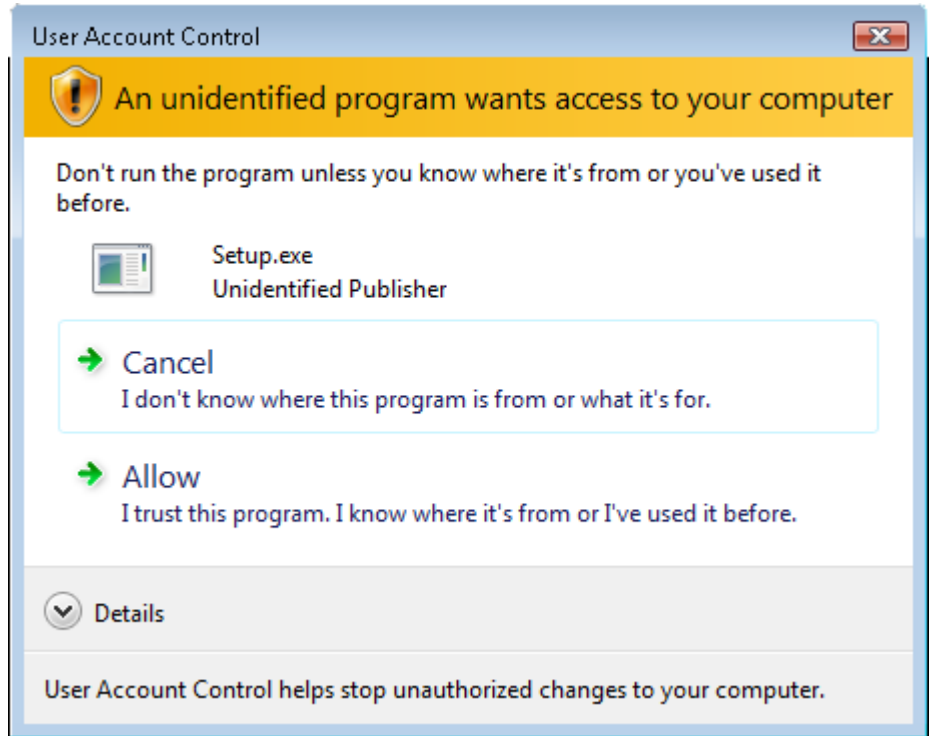
(Use Windows Explorer to browse to the **C:\EcuTek\LicenseKeyDrivers** folder)

## Step 3: Install USB Vehicle Interface drivers

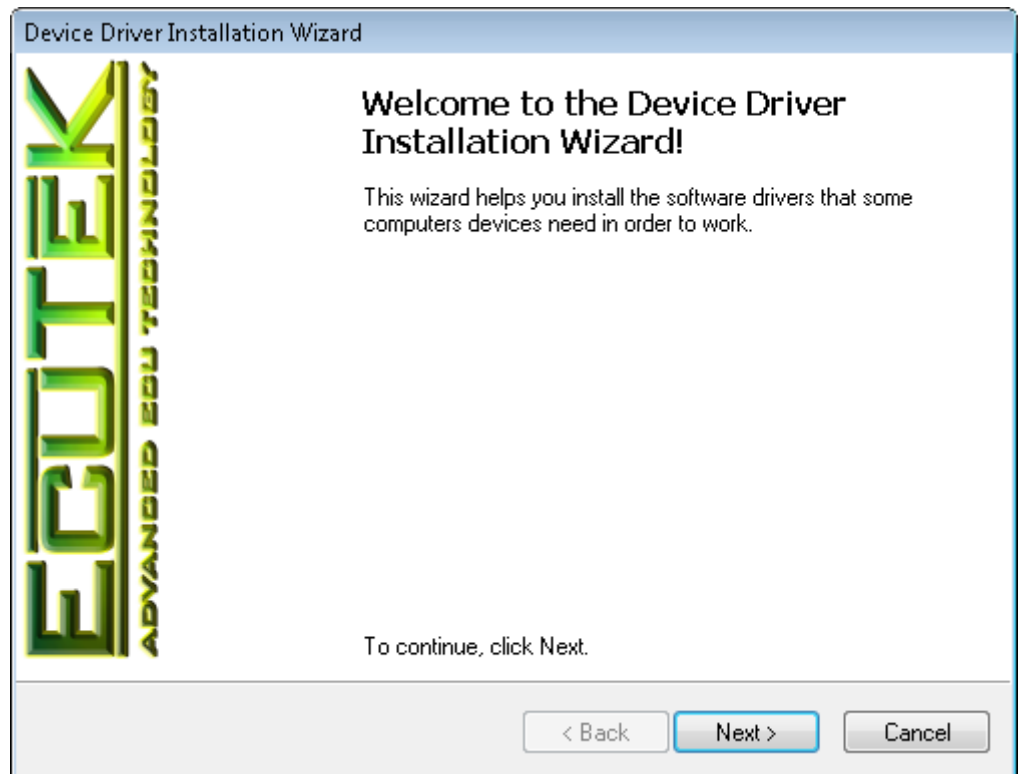
- Open the "VehicleInterfaceDrivers" folder and run the 'Setup' executable. This will install the EcuTek USB Vehicle Interface drivers.

(Use Windows Explorer to browse to the **C:\EcuTek\VehicleInterfaceDrivers** folder)

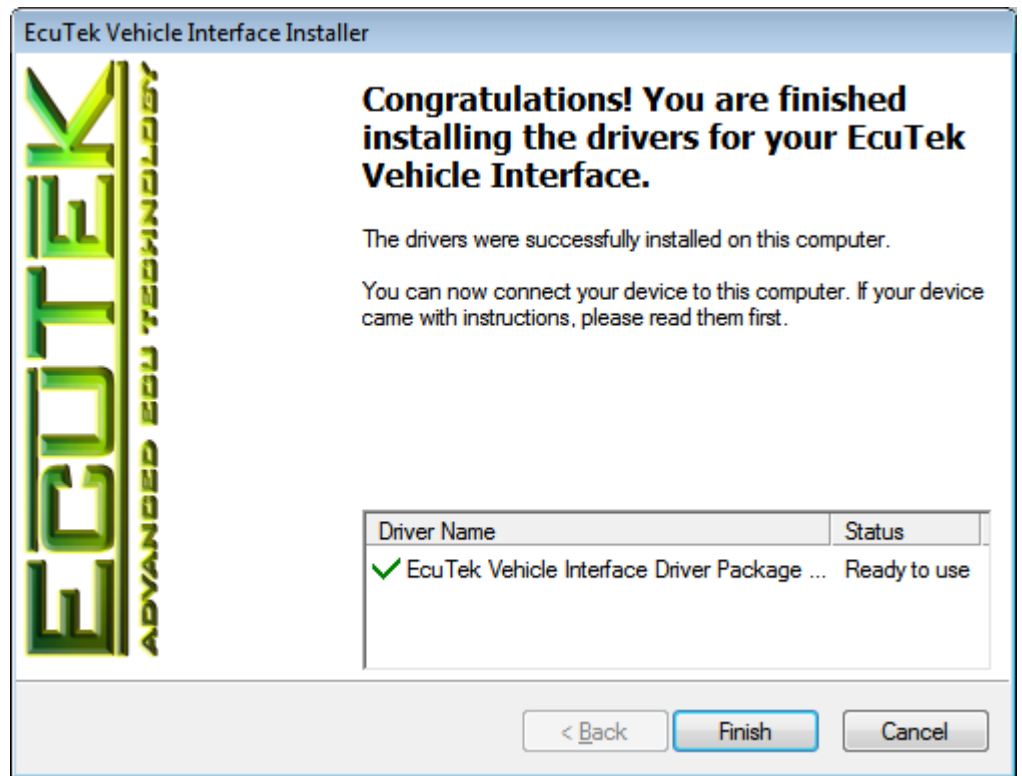
Select 'Allow' when prompted with the following UAC message after running the 'Setup' executable:



Click on 'Next' to start the installation process:



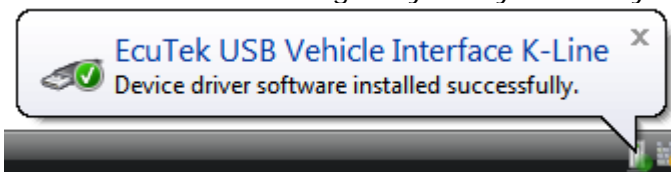
The drivers installed successfully if you received this message:



#### Step 4: Plug in the EcuTek USB Vehicle Interface

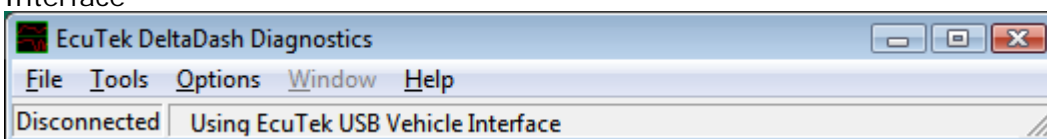
- Plug in the EcuTek USB Vehicle Interface after installing the DESkey & EcuTek drivers.

You will receive a message in your System Tray indicating that the driver was installed successfully:



#### Step 5: Test your EcuTek software

Run any EcuTek software and check that the Status Bar displays 'Using EcuTek USB Vehicle Interface'



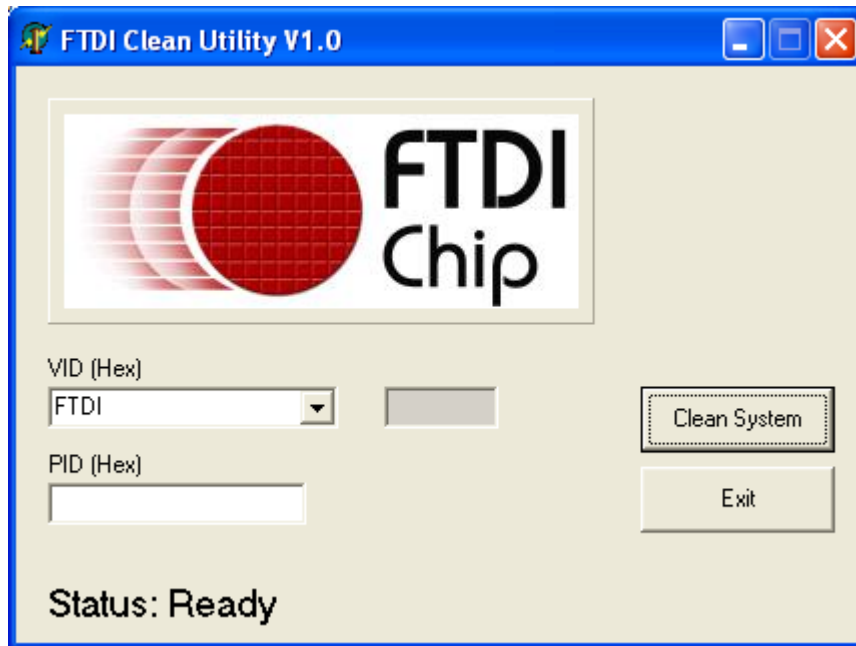
#### Advanced driver installation:

- From the Start Menu, right click on 'Computer' and select 'Manage' to open Computer Management.
- Select Device Manager in the left panel.
- On the right panel right-click on USB Vehicle Interface (under Other devices) and select 'Update Driver Software...'.  
(Your Vehicle Interface is already installed correctly if it is shown as "EcuTek USB Vehicle Interface" under Universal Serial Bus controllers, and does not need updating)
- On the next screen select 'Browse my computer for driver software'.
- On the next screen check click on 'Browse', and browse to the location of the 'VehicleInterfaceDrivers' folder. Then click Next.
- The driver installation completed successfully when the USB Vehicle Interface is installed as an 'EcuTek USB Vehicle Interface K-Line'. Click 'Close' to complete the installation process.

## Uninstall Driver using FTCClean

Uninstalling Windows drivers should always be done by selecting to remove the drivers through the "Add/Remove Programs" utility. It is possible however, to selectively remove devices by running the FTDI uninstaller manually.

- Run 'FTCClean.exe' from the 'C:\EcuTek\VehicleInterfaceDrivers\FTCClean' folder.



- Click on Clean System to start the uninstall of the driver software.
- Make sure that no USB vehicle interface is connected to the computer and click OK.
- Answer the first confirmation with Yes
- Answer the second confirmation with No
- Please wait while the drivers are uninstalling. This could take some time.
- The system now should be cleaned from all old vehicle interface drivers. Close the program by clicking on Exit.

***In case of an error message "File access denied" you have to delete the file 'ftdiun2k.ini' by hand. This file is located in the 'C:\Windows\System32' folder***